

# SusHi 1.4.1: A program for the calculation of Higgs production in gluon fusion and bottom-quark annihilation in the Standard Model, the 2HDM and the MSSM

Robert V. Harlander<sup>1</sup>, Stefan Liebler<sup>2</sup>, Hendrik Mantler<sup>3</sup>

<sup>1</sup>*Fachbereich C, Bergische Universität Wuppertal  
42097 Wuppertal, Germany*

<sup>2</sup>*II. Institut für Theoretische Physik, Universität Hamburg  
22761 Hamburg, Germany*

<sup>3</sup>*Theory Division, CERN, 1211 Geneva 23, Switzerland*

## Abstract

This article describes the code **SusHi** (for “**S**upersymmetric **H**iggs”) [1] which calculates the cross sections  $pp/p\bar{p} \rightarrow \phi + X$  in gluon fusion and bottom-quark annihilation in the SM, the 2HDM and the MSSM, where  $\phi$  is any of the neutral Higgs bosons within these models. Apart from inclusive cross sections up to NNLO QCD, differential cross sections with respect to the Higgs transverse momentum  $p_T$  and (pseudo-)rapidity  $y(\eta)$  can be calculated through NLO QCD. In the case of gluon fusion, **SusHi** contains NLO QCD contributions from the third family of quarks and squarks, NNLO corrections due to top-quarks, approximate NNLO corrections due to top-squarks (for the MSSM), and electro-weak effects. It supports various renormalization schemes for the sbottom sector and the bottom Yukawa coupling, as well as resummation effects of higher order  $\tan\beta$ -enhanced sbottom contributions. **SusHi** provides a link to **FeynHiggs** for the calculation of the MSSM Higgs masses. Through a link to **HiggsBounds** and **HiggsSignals** the MSSM Higgs sector can also be checked against experimental data. For calculations in the 2HDM, **SusHi** can be linked to **2HDMC**.

## Contents

<b>1</b>	<b>Introduction</b>	<b>2</b>
<b>2</b>	<b>Physics background</b>	<b>4</b>
2.1	Standard Model . . . . .	4
2.2	2-Higgs-Doublet-Model . . . . .	5
2.3	Supersymmetry . . . . .	6
2.3.1	Renormalization of the (s)top sector . . . . .	7
2.3.2	Renormalization of the (s)bottom sector . . . . .	7
2.4	Bottom mass calculation/Resummation of $\tan\beta$ -enhanced contributions . . .	9

*Email addresses:* harlander@physik.uni-wuppertal.de (Robert V. Harlander<sup>1</sup>), stefan.liebler@desy.de (Stefan Liebler<sup>2</sup>), hendrik.mantler@cern.ch (Hendrik Mantler<sup>3</sup>)

<b>3</b>	<b>Cross section for gluon fusion</b>	<b>10</b>
3.1	LO cross section . . . . .	11
3.2	NLO virtual contributions . . . . .	12
3.3	NNLO corrections . . . . .	13
3.4	Electro-weak corrections . . . . .	13
<b>4</b>	<b>Cross section for bottom-quark annihilation</b>	<b>15</b>
<b>5</b>	<b>Differential cross sections</b>	<b>16</b>
<b>6</b>	<b>The program SusHi</b>	<b>16</b>
6.1	Workflow . . . . .	16
6.2	External code . . . . .	17
6.3	Installation and Usage . . . . .	18
6.4	Input and output files . . . . .	19
6.4.1	Standard Model . . . . .	19
6.4.2	2-Higgs-Doublet-Model . . . . .	22
6.4.3	Minimal Supersymmetric Standard Model . . . . .	22
6.4.4	Output file . . . . .	24
<b>7</b>	<b>Conclusion</b>	<b>25</b>
<b>Appendix A</b>	<b>Formulas: Higgs-squark couplings</b>	<b>25</b>

## 1. Introduction

The recent observation of a new boson at the Large Hadron Collider (LHC) [2, 3] has opened a new chapter for Higgs phenomenology [4]. For the clear identification of this particle, precise predictions for Higgs production and decay will be absolutely essential. The current status of these efforts is collected in the reports of the LHC Higgs cross section working group [5, 6].

The main production mechanism for a Standard Model (SM) Higgs boson at a hadron collider is gluon fusion, where the gluon-Higgs coupling is mediated mostly by virtual top- and bottom-quarks ( $\sim 7\%$ ). The total inclusive cross section is known through next-to-next-to-leading order (NNLO) in quantum chromodynamics (QCD) [7–18]. Even higher order QCD effects have been calculated [19–24] through resummation; electro-weak contributions reach up to 8% with respect to the leading order (LO) cross section [25–27].

The gluon-fusion mechanism for the neutral Higgs bosons in the Minimal Supersymmetric Standard Model (MSSM) is mediated by quarks and their superpartners, the squarks. For the CP-even MSSM Higgs bosons  $h, H$ , the QCD effects due to quarks can be simply taken over from the SM by a rescaling of the cross section with the corresponding modified Yukawa couplings. For the CP-odd Higgs boson  $A$ , the NNLO QCD corrections to the quark-induced total inclusive cross section have been calculated in Refs. [18, 28, 29]. The same statement holds for the gluon-fusion mechanism in 2-Higgs-Doublet-Models (2HDM)

[30], where a rescaling of the Yukawa coupling allows the inclusion of the third family quark QCD contributions to neutral Higgs production. For recent 2HDM reviews we refer to Refs. [31, 32].

Squark contributions to the gluon-Higgs coupling are typically suppressed by powers of  $m_q/m_{\tilde{q}}$ , and thus of importance mostly for small to moderate squark masses  $m_{\tilde{q}}$ . For the CP-odd Higgs boson  $A$ , they are absent at LO.<sup>1</sup>

The individual components for a calculation of NLO QCD corrections in the MSSM are known: The NLO cross section due to (s)top (s)quarks, gluons, and gluinos was calculated for a CP-even Higgs boson with mass  $m_\phi$  in Refs. [35–37] by applying an effective-theory approach in the limit  $m_\phi \ll m_t, m_{\tilde{t}}, m_{\tilde{g}}$ , similar to what is used in the SM at higher orders. In this approach, even NNLO effects have been first approximated [38], and recently fully calculated [39, 40]. The analogous NLO result for a CP-odd Higgs was first obtained in Ref. [41]. Due to the smallness of the bottom-quark mass, these results cannot be transferred to the bottom/sbottom sector. However, the limit  $m_\phi, m_b \ll m_{\tilde{b}}, m_{\tilde{g}}$  is applicable in a large region of the parameter space, and the corresponding results were presented in Refs. [42, 43]. Recently, more general results for the cross sections, allowing for larger Higgs masses, were obtained for the CP-even and -odd Higgs bosons and both for the top/stop and the bottom/sbottom sector, in Refs. [44, 45]. A fully numerical calculation of the gluon-Higgs form factor for general quark/squark/gluino/Higgs-masses has been reported in Ref. [46]. For the pure squark contributions, the full Higgs-mass dependence of the NLO contribution to the cross section was presented (numerically and/or analytically) in Refs. [47–49].

For large values of the 2HDM/MSSM parameter  $\tan\beta$ , the coupling of the light CP-even Higgs boson to bottom-quarks is significantly enhanced relative to the SM Yukawa coupling, so the bottom sector may be much more important for gluon fusion in the 2HDM/MSSM. In addition, an enhanced bottom-Higgs coupling increases the cross section of another Higgs production mechanism in the 2HDM/MSSM, namely associated production with bottom-quarks,  $pp/p\bar{p} \rightarrow b\bar{b}\phi$ . If the final state quarks are not tagged, a suitable theoretical approach to the cross section is the process  $b\bar{b} \rightarrow \phi$ , called bottom-quark annihilation in what follows.<sup>2</sup> It resums terms of the form  $\ln m_b/m_\phi$  by means of  $b$ -parton distribution functions (PDFs) and was calculated up to NNLO QCD in the SM [51, 52]. The result can be directly translated into the MSSM by rescaling it with the proper bottom-Yukawa coupling; even the dominant sbottom effects can be taken into account by an effective coupling [53, 54]. **SusHi** evaluates both the cross section for gluon fusion and bottom-quark annihilation.

For gluon fusion, **SusHi** includes results for all NLO QCD contributions due to the third generation of quarks and squarks. The real corrections at NLO are well-known; **SusHi** implements them using the routines of Ref. [43]. For the virtual corrections to the pure quark diagrams, it uses the analytic expression of Ref. [55] which was obtained from the integral representation in Ref. [10]. Concerning the genuine virtual supersymmetric (SUSY) corrections, it employs the results of Refs. [35, 36, 44, 45] and Refs. [42, 44] for the (s)top- and the (s)bottom-mediated gluon-Higgs coupling, respectively. NNLO QCD effects are

---

<sup>1</sup>Comprehensive reviews of the Higgs theory within the SM and the MSSM can be found in Refs. [33, 34].

<sup>2</sup>See Ref. [50] for a more detailed discussion.

taken into account for the top-quark induced gluon-Higgs coupling [11–13, 28, 29], and approximately for the top/stop/gluino-induced one [38] by using `ggh@nnlo` [56]. Electro-weak corrections [25–27] are included as tabulated correction factors. The cross section is provided in various renormalization schemes (in particular in the sbottom sector), allowing for an on-shell,  $\overline{\text{DR}}$ , or a dependent renormalization of the soft-breaking parameter  $A_b$ , for example. In addition, the bottom-Yukawa coupling can be chosen on-shell or in the  $\overline{\text{MS}}$ -scheme. Higher-order sbottom effects can be included through the parameter  $\Delta_b$  [57–62].

For the calculation of the bottom-quark annihilation cross section, `SusHi` makes use of `bbh@nnlo` [63] and re-weights its results by the 2HDM/MSSM couplings. It uses the LHAPDF library [64] which allows to conveniently switch between different PDF sets, and it can be linked to `FeynHiggs` [65–68] for the two-loop calculation of the Higgs boson masses in the MSSM. Furthermore the MSSM Higgs results can be checked against experimental data by linking `SusHi` to `HiggsBounds` [69–71] and `HiggsSignals` [72]. For calculations in different 2HDM basis `SusHi` can moreover be linked to `2HDMC` [73].

Apart from inclusive cross sections for gluon fusion and bottom-quark annihilation, `SusHi` allows for (upper and lower) cuts on the transverse momentum and/or the (pseudo-)rapidity of the outgoing scalar  $\phi$ . In case of gluon fusion, differential distributions with respect to these kinematic variables can be obtained (for  $p_T$  not too small).

Note that a number of codes for the calculation of Higgs cross sections in the SM and the MSSM exist, see Refs. [74–80], for example. They overlap with `SusHi` to a greater or lesser extent; the distinctive feature of `SusHi` is to provide full NLO QCD (and partial NNLO and electro-weak) corrections for the dominant production mechanisms of the three neutral Higgs bosons of the 2HDM/MSSM, both inclusive and differential, in various renormalization schemes. Further details will be given below.

The remainder of this paper is organized as follows: In Section 2, we present the physical background of `SusHi`, recalling the framework of the Higgs and quark sectors in the 2HDM and the MSSM. Special emphasis is put on the renormalization of the MSSM squark sectors and the resummation of  $\tan\beta$ -enhanced sbottom corrections in the bottom Yukawa coupling. Subsequently, we discuss the various contributions for the calculation of the gluon-fusion and the bottom-quark annihilation cross section as they enter in `SusHi`. We briefly describe the kinematic variables for which cuts can be applied and distributions be obtained. In Section 6, we describe the program `SusHi`, in particular its workflow, installation, and usage, as well as the input and output files. Our conclusions are given in Section 7. Appendix A contains the couplings of the squarks to the Higgs bosons  $\phi$ .

## 2. Physics background

This section first introduces our notation for the relevant parts of the SM and the MSSM. It describes the renormalization of the squark sector and the possible choices for the bottom Yukawa coupling provided in `SusHi`.

### 2.1. Standard Model

The SM contains one scalar weak isospin doublet which corresponds to a single physical particle  $H$  (electric charge and spin zero). The pure Higgs sector of the Lagrangian is

determined by two parameters: the vacuum expectation value  $v \approx 246$  GeV, and the mass of the Higgs boson  $m_H$ . The Yukawa couplings of the fermions to the Higgs boson are given by  $Y_f = \sqrt{2}m_f/v$ , where  $m_f$  is the fermion mass. **SusHi** requires all input masses in the on-shell scheme, except for the charm- and bottom-quark mass which has to be given as the  $\overline{\text{MS}}$  mass  $m_q(m_q) \equiv m_q^{\overline{\text{MS}}}(m_q^{\overline{\text{MS}}})$ ,  $q \in \{c, b\}$ . The calculation of various internal bottom masses is addressed in Section 2.4.

## 2.2. 2-Higgs-Doublet-Model

Two Higgs doublets  $H_1$  and  $H_2$  with vacuum expectation values  $v_1$  and  $v_2$  respectively are part of the 2HDM. Demanding CP conservation in the Higgs sector, no quartic terms in the Higgs doublets and no tree-level flavor-changing neutral currents, the 2HDM can be cast in four types, which differ by the Higgs-fermion Yukawa couplings. By convention  $H_2$  couples to the right-handed up-type quarks, whereas the couplings to right-handed down-type quarks and leptons can be taken from Tab. 1. For more details we refer to Refs. [31, 32].

Model	Type I	Type II	Flipped	Lepton-specific
up-type quarks	$H_2$	$H_2$	$H_2$	$H_2$
down-type quarks	$H_2$	$H_1$	$H_1$	$H_2$
leptons	$H_2$	$H_1$	$H_2$	$H_1$

Table 1: 2HDM types implemented in **SusHi**.

The two Higgs doublets form two CP-even Higgs fields  $h$  and  $H$  and one CP-odd field  $A$ . Their masses, the ratio of the vacuum expectation values  $\tan\beta = v_2/v_1$  and the CP-even Higgs mixing angle  $\alpha$  are independent input parameters. The latter two angles determine the relative strength  $g_f^\phi$  ( $\phi \in \{h, H, A\}$ ) of the Higgs-fermion Yukawa couplings  $Y_f^\phi = \sqrt{2}m_f g_f^\phi/v$ , which are shown in Tab. 2 for the four different 2HDM types. The leptonic couplings are not presented, since they do not enter the cross section calculation. These normalized couplings are independent of the fermion generation.

Model	Type I	Type II	Flipped	Lepton-specific
$g_u^h$	$\cos\alpha/\sin\beta$	$\cos\alpha/\sin\beta$	$\cos\alpha/\sin\beta$	$\cos\alpha/\sin\beta$
$g_d^h$	$\cos\alpha/\sin\beta$	$-\sin\alpha/\cos\beta$	$-\sin\alpha/\cos\beta$	$\cos\alpha/\sin\beta$
$g_u^H$	$\sin\alpha/\sin\beta$	$\sin\alpha/\sin\beta$	$\sin\alpha/\sin\beta$	$\sin\alpha/\sin\beta$
$g_d^H$	$\sin\alpha/\sin\beta$	$\cos\alpha/\cos\beta$	$\cos\alpha/\cos\beta$	$\sin\alpha/\sin\beta$
$g_u^A$	$\cot\beta$	$\cot\beta$	$\cot\beta$	$\cot\beta$
$g_d^A$	$-\cot\beta$	$\tan\beta$	$\tan\beta$	$-\cot\beta$

Table 2: Relative couplings  $g_f^\phi$  with respect to the SM Yukawa coupling for the four 2HDM types.

Alternatively **SusHi** can be linked to 2HDMC [73], which allows for different input basis. 2HDMC checks the model consistency, namely perturbativity, stability of the vacuum potential and unitarity. The output file of 2HDMC moreover contains the decay widths and branching ratios of the Higgs particles.

### 2.3. Supersymmetry

The MSSM contains two Higgs doublets, named  $H_d$  and  $H_u$ , which develop the vacuum expectation values  $v_d = v \cos \beta$  and  $v_u = v \sin \beta$ , where the parameter  $\beta$  is undetermined. Similar to the 2HDM they form two CP-even Higgs fields  $h, H$ , one CP-odd (or ‘‘pseudo-scalar’’) Higgs field  $A$ , and two charged Higgs fields  $H^\pm$ . At lowest order, the mass spectrum of the Higgs sector is determined by SM parameters,  $\tan \beta = v_u/v_d$ , and the CP-odd Higgs mass  $m_A$ . Radiative corrections to the Higgs mass spectrum are generally quite large [81–83]; currently, they are known through three-loop order [84–86]. **SusHi** provides a way to conveniently take into account two-loop corrections by linking to the program **FeynHiggs** [65–68]. This is an optional feature, however; any Higgs mass can be given as an input to **SusHi**.

The mixing of the isospin to the Higgs mass eigenstates in the CP-even sector is governed by the angle  $\alpha$ . Together with  $\beta$ , it determines the relative strengths of the Higgs boson couplings  $g_f^\phi$  ( $\phi \in \{h, H, A\}$ ) to the SM fermions with respect to the SM Higgs boson couplings (see Appendix A), which thus enter the fermion Yukawa couplings  $Y_f^\phi = \sqrt{2}m_f g_f^\phi/v$  and coincide with the ones from Type II of the 2HDM in Tab. 2. Our calculation includes the third generation of squarks which enters the Lagrangian in the form

$$\mathcal{L} \supset -(\tilde{q}_L^\dagger, \tilde{q}_R^\dagger) \mathcal{M}_{\tilde{q}}^2 \begin{pmatrix} \tilde{q}_L \\ \tilde{q}_R \end{pmatrix}, \quad (1)$$

with the mass matrix

$$\mathcal{M}_{\tilde{q}}^2 = \begin{pmatrix} M_L^2 + m_q^2 + m_Z^2 \cos(2\beta)(T_q^3 - Q_q s_W^2) & m_q(A_q - \mu \kappa_q) \\ m_q(A_q - \mu \kappa_q) & M_{\tilde{q}R}^2 + m_q^2 + m_Z^2 \cos(2\beta)Q_q s_W^2 \end{pmatrix} \quad (2)$$

for an arbitrary species of squarks  $\tilde{q}$ . This formula contains the SUSY soft-breaking parameters  $M_L^2$ ,  $M_{\tilde{q}R}^2$ , and  $A_q$ . The parameter  $\mu$  determines the mass of the fermionic Higgs partners, the Higgsinos, whereas the  $Z$ -boson mass  $m_Z$  and the weak mixing angle  $\theta_W$  ( $s_W = \sin \theta_W$ ) are the usual SM parameters;  $m_q$ ,  $Q_q$ , and  $T_q^3$  are the mass, the electric, and the weak charge of the corresponding quark  $q$ , respectively. It is  $\kappa_b = \tan \beta =: t_\beta$  and  $\kappa_t = 1/t_\beta$ .

The physical particle states are obtained by the diagonalization of the mass matrix in Eq. (2) which we do in accordance with Ref. [87] using

$$\begin{pmatrix} \tilde{q}_1 \\ \tilde{q}_2 \end{pmatrix} = U_{\tilde{q}} \begin{pmatrix} \tilde{q}_L \\ \tilde{q}_R \end{pmatrix} \quad \text{with} \quad U_{\tilde{q}} = \begin{pmatrix} \cos \theta_{\tilde{q}} & \sin \theta_{\tilde{q}} \\ -\sin \theta_{\tilde{q}} & \cos \theta_{\tilde{q}} \end{pmatrix}. \quad (3)$$

By choosing  $0 \leq \theta_{\tilde{q}} < \pi$ , the masses of the squarks  $\tilde{q}_1$  and  $\tilde{q}_2$  are ordered  $m_{\tilde{q}_1} < m_{\tilde{q}_2}$  and given by the square roots of the eigenvalues of  $\mathcal{M}_{\tilde{q}}^2$  in Eq. (2):

$$m_{\tilde{q}_{12}}^2 = \frac{1}{2}(M_L^2 + M_{\tilde{q}R}^2) + m_q^2 + \frac{1}{2}T_q^3 m_Z^2 \cos(2\beta) \mp \frac{1}{2} \sqrt{(M_L^2 - M_{\tilde{q}R}^2 + m_Z^2 \cos(2\beta)(T_q^3 - 2Q_q \sin^2 \theta_W))^2 + 4m_q^2(A_q - \mu \kappa_q)^2}. \quad (4)$$

The entries of  $\mathcal{M}_{\tilde{q}}^2$  can also be expressed in terms of the mass eigenvalues and the mixing angle

$$\mathcal{M}_{\tilde{q}}^2 = \begin{pmatrix} m_{\tilde{q}1}^2 \cos^2 \theta_{\tilde{q}} + m_{\tilde{q}2}^2 \sin^2 \theta_{\tilde{q}} & (m_{\tilde{q}1}^2 - m_{\tilde{q}2}^2) \sin \theta_{\tilde{q}} \cos \theta_{\tilde{q}} \\ (m_{\tilde{q}1}^2 - m_{\tilde{q}2}^2) \sin \theta_{\tilde{q}} \cos \theta_{\tilde{q}} & m_{\tilde{q}1}^2 \sin^2 \theta_{\tilde{q}} + m_{\tilde{q}2}^2 \cos^2 \theta_{\tilde{q}} \end{pmatrix}, \quad (5)$$

which implies that the mixing angle can be obtained from

$$\sin(2\theta_{\tilde{q}}) = \frac{2m_q(A_q - \mu\kappa_q)}{m_{\tilde{q}1}^2 - m_{\tilde{q}2}^2}. \quad (6)$$

Note that Eq. (6) does not uniquely define  $\theta_{\tilde{q}}$ ; a shift  $\theta_{\tilde{q}} \rightarrow \frac{\pi}{2} - \theta_{\tilde{q}}$ , which corresponds to  $\sin \theta_{\tilde{q}} \leftrightarrow \cos \theta_{\tilde{q}}$ , might be in order to allow for  $m_{\tilde{q}1} < m_{\tilde{q}2}$ . For completeness, the couplings of the squarks to the MSSM Higgs bosons can be found in Appendix A.

### 2.3.1. Renormalization of the (s)top sector

Using Eq. (6), we eliminate  $A_t$  from the (s)top sector contribution of the amplitude before renormalization and express it in terms of the on-shell parameters for the top mass  $m_t$ , the stop masses  $m_{\tilde{t}1}$  and  $m_{\tilde{t}2}$  and the mixing angle  $\theta_{\tilde{t}}$ , defined according to Section 3.1 in Ref. [87]. In practice, the user specifies the soft-breaking parameters  $M_L \equiv M_L(\tilde{t})$ ,  $M_{\tilde{t}R}$ , and  $A_t$ , as well as the on-shell top-quark mass  $m_t^{\text{OS}}$ . Setting  $m_t = m_t^{\text{OS}}$ , **SusHi** inserts them into the mass matrix of Eq. (2) whose eigenvalues  $m_{\tilde{t}1}^2, m_{\tilde{t}2}^2$ , as well as the corresponding stop mixing angle  $\theta_{\tilde{t}}$  are interpreted as on-shell parameters.<sup>3</sup> Note that in case **FeynHiggs** is used, the on-shell stop masses and the stop mixing angle are simply taken over from its output.

### 2.3.2. Renormalization of the (s)bottom sector

The renormalization of the (s)bottom sector is more subtle. At tree-level, the soft-breaking parameter  $M_L^2$  is identical for the sbottom and stop sector due to  $SU(2)_L$  symmetry. At higher orders, however, in the on-shell scheme we distinguish  $M_L^2(\tilde{t})$  and  $M_L^2(\tilde{b})$  similar to Ref. [88–91] by

$$M_L^2(\tilde{b}) = M_L^2(\tilde{t}) + \delta M_L^2(\tilde{t}) - \delta M_L^2(\tilde{b}) \equiv M_L^2(\tilde{t}) + \Delta M_L^2, \quad (7)$$

with the individual counterterms given by

$$\delta M_L^2(\tilde{q}) = \cos^2 \theta_{\tilde{q}} \delta m_{\tilde{q}1}^{2,\text{OS}} + \sin^2 \theta_{\tilde{q}} \delta m_{\tilde{q}2}^{2,\text{OS}} - (m_{\tilde{q}1}^2 - m_{\tilde{q}2}^2) \sin(2\theta_{\tilde{q}}) \delta \theta_{\tilde{q}}^{\text{OS}} - 2m_q \delta m_q^{\text{OS}}, \quad (8)$$

where the on-shell counterterms  $\delta m_{\tilde{q}1}^{2,\text{OS}}$ ,  $\delta m_{\tilde{q}2}^{2,\text{OS}}$ ,  $\delta m_q^{\text{OS}}$ , and  $\delta \theta_{\tilde{q}}^{\text{OS}}$  are analogously defined as in the top sector, see Ref. [87].

Note that the finite shift  $\Delta M_L^2$  depends on  $m_{\tilde{b}1}, m_{\tilde{b}2}$ , and  $\theta_{\tilde{b}}$ . In order to determine its numerical value, we first calculate “tree-level” values for the sbottom masses and mixing angle by inserting the parameters

$$M_L^2 \equiv (M_L^2(\tilde{b}))^{\text{tree}} = M_L^2(\tilde{t}), \quad M_{\tilde{b}R}^2, \quad A_b, \quad m_b^{\text{OS}} \quad (9)$$

---

<sup>3</sup>This can be seen as an indirect definition of the renormalization scheme for  $M_L$ ,  $M_{\tilde{t}R}$ , and  $A_t$ .

Manual SusHi 1.4.1

into the mass matrix (2) (setting  $m_b = m_b^{\text{OS}}$ ). All parameters of Eq. (9) are input to **SusHi**, except for the on-shell bottom-quark mass  $m_b^{\text{OS}}$  which is determined from the input parameter  $m_b(m_b)$  as described in Section 2.4. With these tree-level sbottom masses we define the scale

$$\mu_d = \frac{1}{3}(m_{\tilde{g}} + m_{\tilde{b}_1} + m_{\tilde{b}_2}). \quad (10)$$

As was pointed out in Refs. [42, 87, 92, 93], replacing  $A_b$  in the amplitude through Eq. (6) before renormalization – analogous to the stop sector – leads to potentially large corrections  $\delta A_b \propto (\alpha_s \mu^2 \tan^2 \beta)/m_{\tilde{g}}$ . It was therefore suggested to use Eq. (6) in order to eliminate  $m_b$ . The counterterm for  $m_b$  in this scheme, denoted  $\delta m_b^{\text{dep}}$ , is obtained from Eq. (6):

$$\delta m_b^{\text{dep}} = 2m_b \cot(2\theta_{\tilde{b}}) \delta\theta_{\tilde{b}} - \frac{2m_b^2 \cdot \delta A_b}{\sin(2\theta_{\tilde{b}})(m_{\tilde{b}_1}^2 - m_{\tilde{b}_2}^2)} + m_b \frac{\delta m_{\tilde{b}_1}^{2,\text{OS}} - \delta m_{\tilde{b}_2}^{2,\text{OS}}}{m_{\tilde{b}_1}^2 - m_{\tilde{b}_2}^2}. \quad (11)$$

Here it is already implied that we always renormalize the sbottom masses on-shell, while the renormalization of  $A_b$  and  $\theta_{\tilde{b}}$  is still unspecified.

In order to calculate the on-shell sbottom masses, we choose the “on-shell” renormalization of  $A_b$ , defined through a kinematical condition on the  $A\tilde{b}_1\tilde{b}_2$ -vertex [42, 87, 92, 93]. The corresponding counterterm is

$$\delta A_b^{\text{OS}} = (A_b + \mu \cot \beta) \left[ f(m_{\tilde{b}_1}^2, m_{\tilde{b}_2}^2) + f(m_{\tilde{b}_2}^2, m_{\tilde{b}_1}^2) - \frac{\delta m_b^{\text{dep}}}{m_b} \right], \quad (12)$$

with

$$f(m_1^2, m_2^2) = -\frac{\alpha_s(\mu_d)}{\pi} \frac{2}{3} \left\{ \left[ -\frac{m_{\tilde{g}}}{A_b + \mu \cot \beta} B_0^{\text{fin}}(m_1^2, m_b, m_{\tilde{g}}, \mu_d) \right] + \frac{m_1^2}{m_1^2 - m_2^2} \left[ 4 + 2 \log \frac{\mu_R^2}{m_1^2} - \left( 1 - \frac{m_{\tilde{g}}^2}{m_1^2} - \frac{m_b^2}{m_1^2} \right) \cdot B_0^{\text{fin}}(m_1^2, m_b, m_{\tilde{g}}, \mu_d) \right] \right\}, \quad (13)$$

where the function  $B_0^{\text{fin}}$  can be taken from Eq. (B.8) in Ref. [36] replacing  $\mu_R \rightarrow \mu_d$ . Solving Eq. (11) (with  $\delta A_b = \delta A_b^{\text{OS}}$ ) and Eq. (12) for  $\delta A_b^{\text{OS}}$ , we obtain

$$\begin{aligned} \delta A_b^{\text{OS}} = & (A_b \sin \beta + \mu \cos \beta) \left\{ -(m_{\tilde{b}_1}^2 - m_{\tilde{b}_2}^2) \sin(2\theta_{\tilde{b}}) [f(m_{\tilde{b}_1}^2, m_{\tilde{b}_2}^2) + f(m_{\tilde{b}_2}^2, m_{\tilde{b}_1}^2)] \right. \\ & \left. + (\delta m_{\tilde{b}_1}^{2,\text{OS}} - \delta m_{\tilde{b}_2}^{2,\text{OS}}) \sin(2\theta_{\tilde{b}}) + 2\delta\theta_{\tilde{b}}(m_{\tilde{b}_1}^2 - m_{\tilde{b}_2}^2) \cos(2\theta_{\tilde{b}}) \right\} \\ & \cdot [2(\sin \beta (A_b m_b - (m_{\tilde{b}_1}^2 - m_{\tilde{b}_2}^2) \sin \theta_{\tilde{b}} \cos \theta_{\tilde{b}}) + m_b \mu \cos \beta)]^{-1}, \end{aligned} \quad (14)$$

which in turn allows to calculate  $\delta m_b^{\text{dep}}$ . Note that one is still free to choose the renormalization condition for  $\theta_{\tilde{b}}$ .

The on-shell sbottom masses are finally obtained as follows: We calculate the counterterm  $\delta m_b^{\text{dep}}$  from Eq. (11) using  $\delta A_b = \delta A_b^{\text{OS}}$  and  $\delta\theta_{\tilde{b}} = \delta\theta_{\tilde{b}}^{\text{OS}}$ , the “tree-level” sbottom masses and mixing angle and the on-shell bottom mass. This yields a numerical value for  $\Delta M_L^2$  and



similarly for  $m_b^{\text{dep}} = m_b^{\overline{\text{DR}}}(\mu_d) - \delta m_b^{\text{dep}} + \delta m_b^{\overline{\text{DR}}}$ , where the  $\overline{\text{DR}}$  mass is calculated in the SM. Diagonalizing the mass matrix  $\mathcal{M}_{\tilde{b}}^2$  in Eq. (2) with  $m_b = m_b^{\text{dep}}$ , we thus obtain on-shell sbottom masses  $m_{\tilde{b}_1}$  and  $m_{\tilde{b}_2}$  and the on-shell sbottom mixing angle  $\theta_{\tilde{b}}$ . In case **FeynHiggs** is called for the calculation of the MSSM Higgs masses, we take  $m_b^{\text{dep}}$  as well as  $\Delta M_L^2$  from this program which, when inserted into the sbottom mass matrix Eq. (2), results in on-shell sbottom masses and mixing angle consistent with the values given by **FeynHiggs** itself.

After the on-shell sbottom masses have been determined, **SusHi** allows for a change between various schemes regarding the renormalization of  $m_b$ ,  $A_b$ , and  $\theta_{\tilde{b}}$  in the sbottom contribution to the gluon-fusion amplitude. Note, however, that either  $m_b$  or  $A_b$  is required to be a dependent quantity; a dependent renormalization of the sbottom mixing angle is not offered as option. The possible choices are summarized in Tab. 3. Numerical differences in the cross sections between the various renormalization schemes and their implications will be investigated in a separate publication.

Scheme choices			
$m_b$	dep.	OS	$\overline{\text{DR}}$
$A_b$	dep.	OS	$\overline{\text{DR}}$
$\theta_{\tilde{b}}$		OS	$\overline{\text{DR}}$

Table 3: Available renormalization schemes for the sbottom sector. The default option is marked in red.

To summarize, apart from  $\mu$ ,  $\tan\beta$  and the SM parameters, the input parameters of **SusHi** that determine the squark sectors are:

- $M_L^2$ ,  $M_{iR}^2$ ,  $A_t$ ,  $m_t^{\text{OS}}$  which directly determine the on-shell stop masses and mixing angle through diagonalization of Eq. (2)
- $M_{\tilde{b}R}^2$ ,  $A_b$ ,  $m_b(m_b)$ , where  $A_b$  is understood as renormalized according to Eq. (12).

Switching between renormalization schemes changes both the counterterms to the amplitude as well as the numerical values of the parameters  $m_b$ ,  $m_{\tilde{b}_1}$ ,  $m_{\tilde{b}_2}$ ,  $A_b$ , and  $\theta_{\tilde{b}}$ , of course. We remark that changing the renormalization scheme in the sbottom sector affects  $m_b$  only in the Higgs-sbottom couplings; the renormalization of the bottom mass occurring in the Higgs-bottom Yukawa coupling is independent of that (see Section 2.4). For the bottom mass occurring in internal propagators (rather than in couplings), **SusHi** always uses the on-shell value.

The switching between the different renormalization schemes is done at the renormalization scale  $\mu_R$  to guarantee the same coupling strength  $\alpha_s(\mu_R)$  for the NLO counterterms and the cross section itself. In case **SusHi** makes use of the formulas in Refs. [42, 44], the counterterms at NLO are expanded to the correct order in the bottom mass to match the expanded NLO amplitudes.

#### 2.4. Bottom mass calculation/Resummation of $\tan\beta$ -enhanced contributions

The bottom-quark mass in the input files of **SusHi** is inserted in the  $\overline{\text{MS}}$  scheme  $m_b(m_b)$ . Together with the input value of  $\alpha_s(m_Z)$ , we calculate  $\alpha_s(m_b(m_b))$  by 4-loop running with

5 active flavors. Using Eq. (13) of Ref. [94] at 3-loop level (see also Ref. [95]),  $m_b(m_b)$  is transformed into its on-shell value  $m_b^{\text{OS}}$ .

In the SM, the bottom Yukawa coupling  $Y_b = \sqrt{2}m_b^Y/v$  can be chosen  $m_b^Y = m_b^{\text{OS}}$  or alternatively  $m_b^Y = m_b^{\overline{\text{MS}}}(\mu_b)$ , where  $\mu_b \in \{m_b, \mu_R\}$ ;  $\mu_R$  denotes the renormalization scale. As indicated above, the bottom mass entering the internal propagators is always set to the on-shell mass  $m_b^{\text{OS}}$  in SusHi. In the MSSM, SusHi offers various options regarding the choice of the Higgs-bottom Yukawa coupling  $Y_b^\phi = \sqrt{2}m_b^{Y,\phi}g_\phi/v$ :

$$\text{on-shell coupling: } m_b^{Y,\phi} = m_b^{\text{OS}} \quad (15a)$$

$$\text{basic resummation: } m_b^{Y,\phi} = \frac{m_b^{\text{OS}}}{1 + \Delta_b} \quad (15b)$$

$$\text{full resummation } h: m_b^{Y,h} = \frac{m_b^{\text{OS}}}{1 + \Delta_b} \left( 1 - \Delta_b \frac{\cot \alpha}{\tan \beta} \right) \quad (15c)$$

$$H: m_b^{Y,H} = \frac{m_b^{\text{OS}}}{1 + \Delta_b} \left( 1 + \Delta_b \frac{\tan \alpha}{\tan \beta} \right) \quad (15d)$$

$$A: m_b^{Y,A} = \frac{m_b^{\text{OS}}}{1 + \Delta_b} \left( 1 - \Delta_b \frac{1}{\tan^2 \beta} \right) \quad (15e)$$

$$\text{Running coupling: } m_b^{Y,\phi} = \frac{m_b^{\overline{\text{MS}}}(\mu_b)}{1 + \Delta_b} \quad (15f)$$

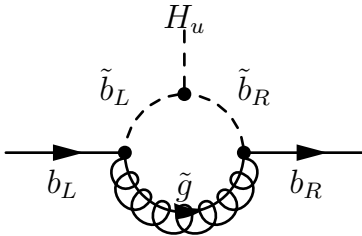


Figure 1: Feynman diagram inducing an effective coupling of the bottom-quarks to  $H_u$ . The coupling is proportional to  $\mu t_\beta$  and can be resummed in  $\Delta_b$ .

Herein,  $\Delta_b$  resums higher order sbottom contributions as shown in Fig. 1 [57–62], for example, calculated at the scale  $\mu_d$ , defined in Eq. (10). The exact formula is given by:

$$\Delta_b = \frac{2}{3\pi} \alpha_s(\mu_d) m_{\tilde{g}} \mu t_\beta I(m_{\tilde{b}_1}^2, m_{\tilde{b}_2}^2, m_{\tilde{g}}^2) \quad (16)$$

$$I(a, b, c) = \frac{ab \ln(\frac{a}{b}) + bc \ln(\frac{b}{c}) + ca \ln(\frac{c}{a})}{(a-b)(b-c)(a-c)} \quad (17)$$

If the input values for SusHi are determined by FeynHiggs, SusHi allows to use the value of  $\Delta_b$  as given in the output of this program which contains also the electro-weak contributions from neutralinos and charginos in accordance with Ref. [96]; two-loop corrections to  $\Delta_b$  [97–99] are not yet included. For the running coupling in Eq. (15f), the scale  $\mu_b$  can be set to  $m_b$  or  $\mu_R$ . The numerical differences between the various schemes will be discussed in a forthcoming publication.

### 3. Cross section for gluon fusion

As indicated in the Introduction, the most important production channel in the SM and for moderate values of  $t_\beta$  in the 2HDM/MSSM is gluon fusion. After quoting the well-known

## Manual SusHi 1.4.1

results for the LO cross section, our implementation of the NLO contributions is explained. A discussion of NNLO and electro-weak contributions follows.

Using the notation of Ref. [10], the hadronic cross section for  $\phi \in \{h, H, A\}$  at NLO QCD can be written as follows:

$$\sigma(pp \rightarrow \phi + X) = \sigma_0^\phi \left[ 1 + C^\phi \frac{\alpha_s}{\pi} \right] \tau_\phi \frac{d\mathcal{L}^{gg}}{d\tau_\phi} + \Delta\sigma_{gg}^\phi + \Delta\sigma_{gq}^\phi + \Delta\sigma_{q\bar{q}}^\phi, \quad (18)$$

where  $\tau_\phi = m_\phi^2/s$ , with the hadronic center-of-mass energy  $s$ . The factor  $\sigma_0^\phi$  is determined by the LO cross section,  $C^\phi$  arises from NLO terms in the partonic cross section that are singular as  $\hat{s} \rightarrow m_\phi^2$  ( $\hat{s}$  is the partonic center-of-mass energy), and

$$\frac{d\mathcal{L}^{gg}}{d\tau} = \int_\tau^1 \frac{dx}{x} g(x)g(\tau/x) \quad (19)$$

is the gluon-gluon luminosity. The quantities  $\Delta\sigma_{gg}^\phi$ ,  $\Delta\sigma_{gq}^\phi$ , and  $\Delta\sigma_{q\bar{q}}^\phi$  comprise the terms that are regular as  $\hat{s} \rightarrow m_\phi^2$  in the partonic cross section, arising from  $gg$ ,  $gq$  and  $q\bar{q}$  scattering, respectively. Loosely speaking,  $C^\phi$  is due to the virtual, while the  $\Delta\sigma_{ij}^\phi$  are due to the real radiation contributions. The latter are implemented in SusHi by expressing them in terms of Passarino-Veltman functions [100], see Ref. [43]. The strong coupling  $\alpha_s$  for the cross section calculations is renormalized in standard QCD with five active quark flavors.

### 3.1. LO cross section

Taking into account the third generation of quarks (and squarks in the MSSM), the normalization factor in Eq. (18) can be written in the form

$$\sigma_0^\phi = \frac{G_F \alpha_s^2(\mu_R)}{288\sqrt{2}\pi} |\mathcal{A}^{\phi,(0)}|^2, \quad (20)$$

with Fermi's constant  $G_F$ . The amplitude  $\mathcal{A}$  for is given by

$$\mathcal{A}^{\phi,(0)} = \sum_{q \in \{t,b\}} (a_q^{\phi,(0)} + \tilde{a}_q^{\phi,(0)}), \quad (21)$$

with the individual contributions for  $\phi \in \{h, H\}$

$$a_q^{\phi,(0)} = g_q^\phi \frac{3\tau_q^\phi}{2} (1 + (1 - \tau_q^\phi)f(\tau_q^\phi)), \quad \tilde{a}_q^{\phi,(0)} = -\frac{3\tau_q^\phi}{8} \sum_{i=1}^2 g_{\tilde{q},ii}^\phi (1 - \tau_{\tilde{q}i}^\phi f(\tau_{\tilde{q}i}^\phi)), \quad (22)$$

using the notation

$$\tau_q^\phi = \frac{4m_q^2}{m_\phi^2}, \quad \tau_{\tilde{q}i}^\phi = \frac{4m_{\tilde{q}i}^2}{m_\phi^2} \quad (23)$$

and the function

$$f(\tau) = \begin{cases} \arcsin^2 \frac{1}{\sqrt{\tau}} & \tau \geq 1 \\ -\frac{1}{4} \left( \log \frac{1+\sqrt{1-\tau}}{1-\sqrt{1-\tau}} - i\pi \right)^2 & \tau < 1 \end{cases}. \quad (24)$$

For the CP-odd Higgs  $\phi = A$ , the squarks do not contribute at LO, i.e.  $\tilde{a}_q^{A,(0)} = 0$ , and the quark contribution can be written in the form

$$a_q^{A,(0)} = g_q^A \frac{3\tau_q^A}{2} \tau_q^A f(\tau_q^A). \quad (25)$$

The couplings  $g_f^\phi$  of the Higgs  $\phi$  to the quarks can be taken from Tab. 2 (Type II for MSSM), the couplings  $g_{\tilde{q},ij}^\phi$  to the squarks from Appendix A. Needless to say, in the SM, the squark couplings have to be set to zero (also for the 2HDM) and the quark couplings to  $g_q^\phi = 1$ .

### 3.2. NLO virtual contributions

As indicated above, the coefficient  $C^\phi$  contains the virtual corrections to the  $gg$  process and is regularized by the infrared singular part; moreover, it includes the counterterms to LO quantities. We write it as

$$C^\phi = 2\text{Re} \left[ \frac{\mathcal{A}^{\phi,(1)}}{\mathcal{A}_\infty^{\phi,(0)}} \right] + \pi^2 + \beta_0 \log \left( \frac{\mu_{\text{R}}^2}{\mu_{\text{F}}^2} \right), \quad (26)$$

where  $\beta_0 = 11/2 - n_f/3$  with  $n_f = 5$ ;  $\mu_{\text{F}}$  and  $\mu_{\text{R}}$  denote the factorization and the renormalization scale, respectively. The NLO amplitude  $\mathcal{A}^{\phi,(1)}$  and the LO amplitude  $\mathcal{A}_\infty^{\phi,(0)}$  in the limit of large stop and sbottom masses are given by

$$\mathcal{A}^{\phi,(1)} = \sum_{q \in \{t,b\}} (a_q^{\phi,(1)} + \tilde{a}_q^{\phi,(1)}), \quad \mathcal{A}_\infty^{\phi,(0)} = \sum_{q \in \{t,b\}} \left( a_q^{\phi,(0)} + \frac{\tau_q^\phi}{8} \sum_{i=1}^2 \frac{g_{\tilde{q},ii}^\phi}{\tau_{\tilde{q}i}^\phi} \right). \quad (27)$$

Available results for the NLO contributions have been discussed in the Introduction. In **SusHi**, we use the analytic formulas of Ref. [55] for the quark-induced terms  $a_q^{\phi,(1)}$ . The purely squark-induced terms (see Fig. 2 (a), for example) need to be considered in combination with the mixed quark/squark/gluino diagrams (two examples are shown in Fig. 2) in order to preserve supersymmetry, resulting in the coefficient  $\tilde{a}_q^{\phi,(1)}$ . **SusHi** implements expansions for these amplitudes in two limits:

- $m_\phi \ll m_q, m_{\tilde{q}1}, m_{\tilde{q}2}, m_{\tilde{g}}$  [35–37] which is valid through  $m_\phi < \min(2m_q, 2m_{\tilde{q}}, m_{\tilde{q}} + m_q + m_{\tilde{g}})$  and thus applies to the top-stop sector as long as  $\phi$  is not too heavy. **SusHi** incorporates the publicly available program `evalcsusy.f` [101] in order to use this result for the light Higgs  $h$ .
- $m_\phi, m_q \ll m_{\tilde{q}1}, m_{\tilde{q}2}, m_{\tilde{g}}$  [42–45] which holds through  $m_\phi < \min(2m_{\tilde{q}}, m_{\tilde{q}} + m_{\tilde{g}})$ , and thus applies to the bottom-sbottom sector, as well as to the top-stop sector when  $\phi$  is heavy; **SusHi** uses the formulas of Refs. [44, 45] in these cases.

Note that both expansions hold only as long as the Higgs mass is not much heavier than the typical SUSY mass. For larger Higgs masses, only the fully numerical result of Ref. [46] is known so far.

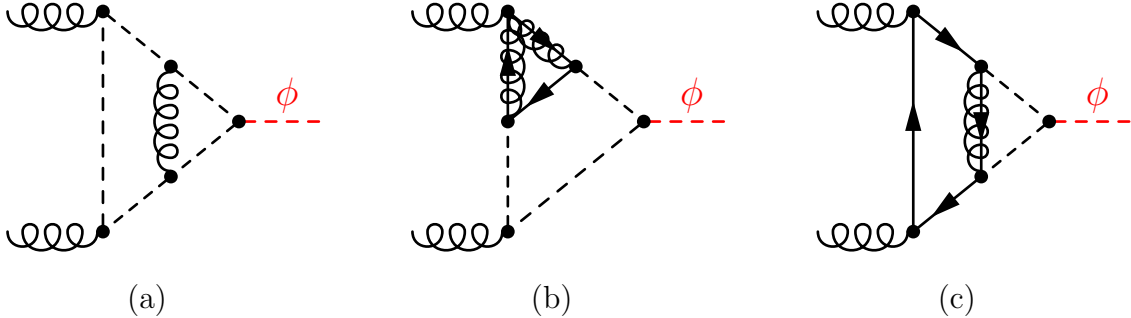


Figure 2: Example Feynman diagrams contributing to  $\tilde{a}_q^{\phi,(1)}$ : gluon-squark contribution (left), gluino-quark-squark contribution (middle) and gluino-quark-squark contribution (right). The latter is partially resummed by the usage of  $\Delta_b$  from Eq. (16).

### 3.3. NNLO corrections

While the implementation of NLO corrections allows for the evaluation of inclusive and exclusive quantities, NNLO corrections are available in **SusHi** only for the total inclusive cross section. In addition, only the top-(s)quark induced gluon-Higgs coupling is taken into account at NNLO; the top-squark induced one only approximately:

$$\sigma_{gg\phi,NNLO}^{\text{MSSM}} = \sigma_{gg\phi,NLO}^{\text{MSSM}} + (\sigma_{gg\phi,NNLO}^t - \sigma_{gg\phi,NLO}^t), \quad (28)$$

where, on the right-hand side, the NNLO term is evaluated with the NNLO PDFs, while the NLO terms are evaluated as usual with NLO PDFs.

The (N)NLO top-(s)quark contributions to the cross sections  $\sigma_{gg\phi,(N)NLO}^t$  are calculated with the help of the programs **ggh@nnlo** [56] and **evalcsusy** [101] which work in the effective theory approach of heavy top (s)quarks. The NNLO top-squark (and mixed top/stop/gluino) effects have been evaluated [39, 40] for  $\phi = h$  by applying the limit  $m_\phi \ll m_q, m_{\tilde{q}_1}, m_{\tilde{q}_2}, m_{\tilde{g}}$ . The result has been implemented in a computer code that involves **Mathematica** and a number of other programs. **SusHi** includes an approximation of these NNLO effects for all three Higgs bosons according to Ref. [38]. A detailed description is provided in Sect. 3.4.2 of Ref. [102].

### 3.4. Electro-weak corrections

The full NLO electro-weak (EW) corrections are known only in the SM [25]. It has been suggested to assume complete factorization of QCD and EW effects [103], thus writing

$$\sigma_{ggH,NNLO,EW}^{\text{SM},t} = (1 + \delta_{\text{EW}}) \sigma_{ggH,NNLO}^{\text{SM},t}. \quad (29)$$

For the CP-even Higgs bosons in the MSSM, a formula based on Eq. (28) and Eq. (29) has been used for the combination of QCD and electro-weak corrections in Ref. [43]:

$$\sigma_{gg\phi,NNLO,EW}^{\text{MSSM}} = \sigma_{gg\phi,NLO}^{\text{MSSM}} + (1 + \delta_{\text{EW}}) \sigma_{gg\phi,NNLO}^t - \sigma_{gg\phi,NLO}^t, \quad (30)$$

or, at NLO precision,

$$\sigma_{gg\phi,\text{NLO,EW}}^{\text{MSSM}} = \sigma_{gg\phi,\text{NLO}}^{\text{MSSM}} + \delta_{\text{EW}} \sigma_{gg\phi,\text{NLO}}^t. \quad (31)$$

Clearly, one may also apply this formula in the 2HDM.

Alternatively, it has been suggested in Ref. [75] to use the SM electro-weak corrections due to light quarks only [26, 27]. Following Ref. [75], we define the correction factor

$$\delta_{\text{EW}}^{\text{lf}} = \frac{\alpha_{\text{EM}}}{\pi} \frac{2\text{Re}(\mathcal{A}^{\phi,(0)} \mathcal{A}^{\phi,\text{EW}*})}{|\mathcal{A}^{\phi,(0)}|^2}, \quad (32)$$

where  $\mathcal{A}^{\phi,(0)}$  denotes the complete LO amplitude including quark and squark diagrams, see Eq. (21), and the electro-weak amplitude is given by [27]

$$\mathcal{A}^{\phi,\text{EW}} = -\frac{3x_W}{8s_W^2} \left[ \frac{2}{c_W^4} \left( \frac{5}{4} - \frac{7}{3}s_W^2 + \frac{22}{9}s_W^4 \right) A_1[x_Z] + 4A_1[x_W] \right] g_V^\phi, \quad (33)$$

with

$$x_V = \frac{1}{m_\phi^2} \left( m_V - i \frac{\Gamma_V}{2} \right)^2, \quad V \in \{W, Z\}, \quad (34)$$

the electro-magnetic coupling  $\alpha_{\text{EM}}$ , and  $s_W = \sin\theta_W = (1 - c_W^2)^{1/2}$  the sine of the weak mixing angle. The Higgs mixing angle  $\alpha$  and the ratio  $\tan\beta$  in the 2HDM and the MSSM enter through the relative couplings  $g_V^\phi$  given by

$$g_V^h = \sin(\beta - \alpha), \quad g_V^A = 0, \quad g_V^H = \cos(\beta - \alpha). \quad (35)$$

The function  $A_1[x]$  can be found in Refs. [26, 27]. Since its numerical evaluation is rather involved, SusHi implements  $\delta_{\text{EW}}^{\text{lf}}$  (and  $\delta_{\text{EW}}$ ) in terms of an interpolation grid in  $m_\phi$  (and  $m_t$ ), using fixed values for the gauge boson masses and widths, as well as for the weak mixing angle ( $m_W = 80.385 \text{ GeV}$ ,  $\Gamma_W = 2.085 \text{ GeV}$ ,  $\sin^2\theta_W = 0.22295$ ,  $m_Z = 91.1876 \text{ GeV}$ ,  $\Gamma_Z = 2.4952 \text{ GeV}$  [104]); the input values to SusHi for these parameters are ignored in the evaluation of the electro-weak corrections. The electro-weak correction factor due to light quarks  $\delta_{\text{EW}}^{\text{lf}}$  multiplies the NLO 2HDM/MSSM cross section, while the NNLO QCD effects are simply added as in Eq. (28):

$$\sigma_{gg\phi}^{2\text{HDM,MSSM}} = \sigma_{gg\phi,\text{NLO}}^{2\text{HDM,MSSM}} (1 + \delta_{\text{EW}}^{\text{lf}}) + \sigma_{gg\phi,\text{NNLO}}^t - \sigma_{gg\phi,\text{NLO}}^t. \quad (36)$$

SusHi leaves it up to the user to decide whether to use Eq. (30) or Eq. (36) in order to include the electro-weak corrections. In the input file (see Section 6.4), this is controlled by

Block SUSHI, entry 7	
value	effect
0	no EW corrections
1	use Eq. (36)
2	use Eq. (30)

For a SM-like Higgs and  $m_\phi < 2m_t$ , both approaches lead to comparable NLO results. The EW corrections for a CP-odd Higgs are not known and thus not included.

#### 4. Cross section for bottom-quark annihilation

In supersymmetric theories, where the Higgs coupling to bottom-quarks can be enhanced by  $\tan\beta$ , associated production  $(b\bar{b})\phi+X$  can be similarly or even more important than gluon fusion. Two theoretical approaches have been pursued for the theoretical description of this process: In the four-flavor scheme (4FS), the relevant production processes at lowest order QCD are  $gg \rightarrow (b\bar{b})\phi$  (see Fig. 3 (a)) and quark-antiquark annihilation  $q\bar{q} \rightarrow (b\bar{b})\phi$  [105–107]. However, when integrating over all final-state bottom-quark momenta, potentially large logarithms  $\ln m_b/m_\phi$  occur. They can be resummed by the introduction of bottom-quark PDFs, which defines the five-flavor scheme (5FS) [108, 109]. The LO process in this latter scheme is bottom-quark annihilation  $b\bar{b} \rightarrow \phi$  for which the lowest-order Feynman diagram is shown in Fig. 3 (b).

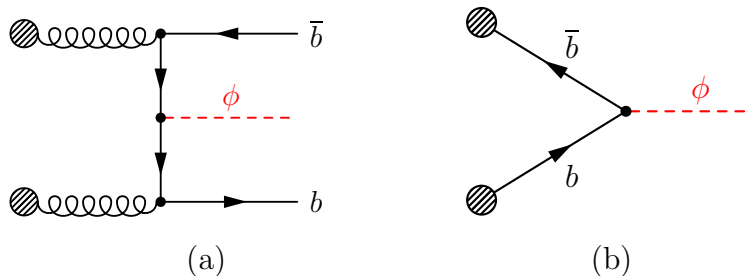


Figure 3: Feynman diagrams showing the associated production process  $gg \rightarrow (b\bar{b})\phi$  in the 4FS (left) and bottom-quark annihilation in the 5FS (right).

**SusHi** implements results for associated  $b\bar{b}\phi$ -production in the 5FS. For the inclusive cross section, it links the program `bbh@nnlo` [52] in order to obtain the NNLO QCD prediction  $\sigma_{bbH}^{\text{SM}}$  using  $m_b^{\overline{\text{MS}}}(\mu_R)$  for the bottom Yukawa coupling. This is then re-weighted by the corresponding resummed SUSY coupling  $\tilde{g}_b^h$  [61, 110] as follows

$$\sigma_{bb\phi}^{\text{MSSM}} = \sigma_{bbH}^{\text{SM}} \cdot (\tilde{g}_b^\phi)^2 \quad \text{with} \quad \tilde{g}_b^h = \frac{g_b^h}{1 + \Delta_b} \left( 1 - \Delta_b \frac{\cot\alpha}{\tan\beta} \right), \quad (37)$$

$$\tilde{g}_b^H = \frac{g_b^H}{1 + \Delta_b} \left( 1 + \Delta_b \frac{\tan\alpha}{\tan\beta} \right), \quad \tilde{g}_b^A = \frac{g_b^A}{1 + \Delta_b} \left( 1 - \Delta_b \frac{1}{\tan^2\beta} \right), \quad (38)$$

where the  $g_b^\phi$  are given in Tab. 2 and  $\Delta_b$  is determined as described in Section 2.4. In case of the 2HDM the cross section is obtained by  $\sigma_{bb\phi}^{2\text{HDM}} = \sigma_{bbH}^{\text{SM}} \cdot (g_b^\phi)^2$ .

For differential cross sections due to bottom-quark annihilation, **SusHi** includes the NLO virtual corrections for  $b\bar{b} \rightarrow \phi$  and combines them with the LO real-radiation processes  $b\bar{b} \rightarrow g\phi$  and  $bg \rightarrow b\phi$  using dipole subtraction.<sup>4</sup> Similar to the fully inclusive case, we multiply with the resummed SUSY couplings to obtain MSSM cross sections.

<sup>4</sup>We are grateful to M. Wiesemann for providing us with the corresponding **Fortran** routines which entered the studies presented in Refs. [111, 112].

## 5. Differential cross sections

Apart from the total inclusive cross sections due to gluon fusion and bottom-quark annihilation, `SusHi` also allows for the computation of differential cross sections in these processes. In particular, one may apply upper and lower cuts on the Higgs transverse momentum  $p_T$ , its rapidity  $y$  or its pseudo-rapidity  $\eta$ , where

$$\eta = -\ln\left(\tan\frac{\theta}{2}\right) = \frac{1}{2}\left(\frac{|\vec{p}| + p_L}{|\vec{p}| - p_L}\right), \quad y = \frac{1}{2}\left(\frac{E + p_L}{E - p_L}\right). \quad (39)$$

Here,  $\vec{p} = \vec{p}_T + \vec{p}_L$  is the 3-momentum of the Higgs boson,  $p_L$  the longitudinal component,  $E$  the Higgs boson's energy, and  $\theta$  the scattering angle (all in the hadronic reference frame). For gluon fusion, `SusHi` also provides the differential quantities  $d\sigma/dp_T$ ,  $d\sigma/dy$ , and  $d^2\sigma/(dp_T dy)$  (or, alternatively,  $d\eta$  instead of  $dy$ ). We add that, since the distribution in  $y$  and  $\eta$  is symmetric, minimal and maximal values for  $y$  are understood as  $0 \leq y_{\min} \leq |y| \leq y_{\max}$  (and similarly for  $\eta$ ). In order to get reliable results, the precision for the numerical integration in `SusHi` should be set to a higher value for differential quantities than for inclusive cross sections. Some combinations of distributions and cuts are not allowed due to numerical instabilities.

Note that at LO, i.e.,  $\mathcal{O}(\alpha_s^2)$  for gluon fusion and  $\mathcal{O}(\alpha_s^0)$  for bottom-quark annihilation, the Higgs transverse momentum is always  $p_T = 0$ . `SusHi` provides results for non-inclusive quantities through NLO, i.e.,  $\mathcal{O}(\alpha_s^3)$  for gluon fusion and  $\mathcal{O}(\alpha_s)$  for bottom-quark annihilation. Let us also add that  $p_T$ -cuts or  $p_T$ -distributions should not be too low ( $p_T/m_\phi \gtrsim 0.1$ ), since otherwise potentially large logarithms may spoil the perturbative convergence of the fixed-order results implemented in `SusHi`. For the resummation of such terms in Higgs production, see Refs. [113, 114], for example. The electroweak contributions by light quarks for gluon fusion can be added in case of distributions and cuts following Eq. (36).

## 6. The program `SusHi`

This section describes the most important technical details of the program `SusHi`, including its installation and usage.

### 6.1. Workflow

The workflow of `SusHi` is depicted in Fig. 4. The input is controlled by a single input file whose format is SLHA-inspired [115, 116]. In case of the MSSM, the user specifies whether the Higgs mass is calculated by `FeynHiggs` or provided by the user himself. After the initialization of internal parameters which are derived from the input data, `SusHi` transforms them to the specified renormalization scheme and determines the resummation of  $\tan\beta$ -enhanced terms in the bottom Yukawa coupling, see Sections 2.3.2 and 2.4. Afterwards, the gluon fusion and bottom-quark annihilation cross sections are calculated up to the desired perturbative order. The NNLO top-(s)quark induced and the electro-weak contributions for gluon fusion are taken into account only for the inclusive cross section. Not shown in the workflow is the link to `LHAPDF` which occurs at various stages of the internal calculation. The output is printed to the screen and written to an output file which follows the same format as the input file. Details concerning the in- and output files are given in Section 6.4.



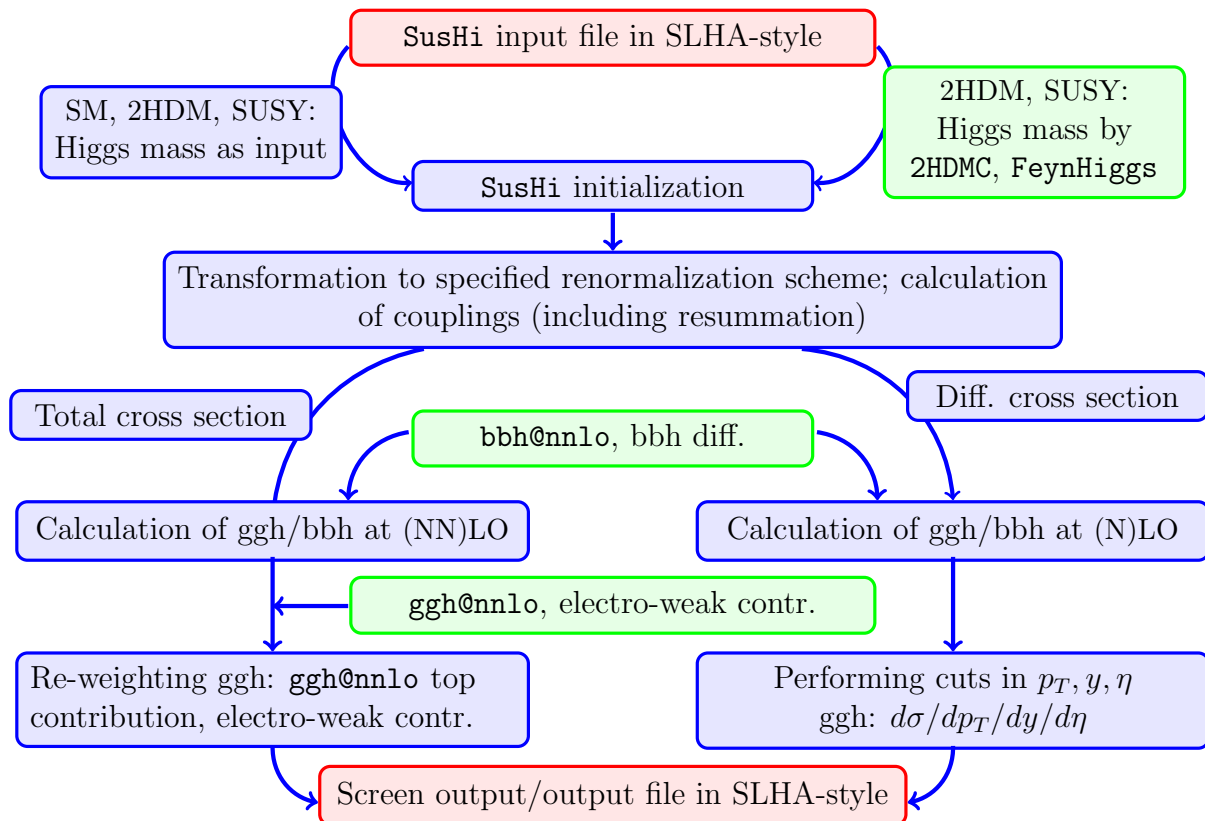


Figure 4: Internal workflow of `SusHi`. Red boxes indicate interaction with the user, who has to provide an input and gets an output file, if no error messages are shown. Green boxes refer to external code (see text), which is linked to/included in `SusHi`.

## 6.2. External code

As already mentioned, `SusHi` includes existing code like `ggh@nnlo`, `bbh@nnlo`, or the electro-weak grid. The integration of these programs does not require any action from the user though; they are part of the distribution and are simply linked to `SusHi` upon compilation.

However, `SusHi` can/must be linked to the following external code:

- `FeynHiggs` [65–68]: For the calculation of the supersymmetric Higgs masses  $\phi \in \{h, H, A\}$ , `SusHi` can be linked to `FeynHiggs`. Its input is controlled via the `SusHi` input files. Note that the current version of `SusHi` does not support complex MSSM parameters, so `FeynHiggs` is called with the default flags for the real MSSM. Details about the flags can be found Section 6.4.3.
- `2HDMC` [73]: For calculations within the 2HDM `SusHi` can be linked to `2HDMC`. Thus, different 2HDM input basis are possible as well as various theoretical consistency checks. Moreover `2HDMC` provides the decay widths and branching ratios of the Higgs particles. `2HDMC` is controlled via the block `2HDMC` in the `SusHi` input files.

## Manual SusHi 1.4.1

- LHAPDF [64]: SusHi has to be linked to LHAPDF which provides a large variety of different PDF sets. This allows one to change the PDF set used by SusHi simply by changing the input file.

### 6.3. Installation and Usage

A tarball with the source files of SusHi can be obtained from Ref. [1]. Unpacking results in a main folder with the following subfolders:

**bin** : contains the executable program `sushi` after compilation

**example** : various example input files to be used in **bin**

**include, lib** : object files and libraries

**src** : SusHi source files, including external code

The file `README` in the main directory contains installation instructions and the history of the code. Compilation is most easily done by adjusting and running the Makefile in the main folder as follows:

- Specify the location and the name of the library of LHAPDF, for example:  
`PDFLIB = /usr/local/lib`  
`PDFLIB = -lLHAPDF`
- If `FeynHiggs` should be used, specify the main directory of the compiled `FeynHiggs` library, for example:  
`FHPATH = /home/.../FeynHiggs-x.x.x`  
Note that SusHi requires `FeynHiggs` version 2.9 or higher. Please specify the `FeynHiggs` version in the variable `FHVERSION = 2.9.x`.
- If `HiggsBounds` and/or `HiggsSignals` should be used, specify the main directories of the compiled `HiggsBounds` and/or `HiggsSignals` library, for example:  
`HBPATH = /home/.../HiggsBounds-4.x.x`  
and/or  
`HSPATH = /home/.../HiggsSignals-1.x.x`
- If `2HDMC` should be used, specify the main directory of the compiled `2HDMC` directory, for example:  
`2HDMCPATH = /home/.../2HDMC-1.5`
- Run the configure script in the main folder:

```
./configure
```

It tries to find the `gfortran` or `ifort` compiler and the dependences on your local machine. If you prefer a different compiler, or if the script fails, you can specify the relevant variables (`F77` and `LDFLAGS`) in the file `compilerissues` yourself. Typing `./configure F77FLAGS=...` allows to add compiler flags, which might be needed on some machines.

- In the main folder, run make:

```
make [option]
```

This command takes the following optional arguments: `make predef=``FH` includes the link to `FeynHiggs` (in contrast to previous versions `SusHi`  $\leq$  1.0.6, where `FeynHiggs` was included by default); `make predef=``HB` includes the link to `HiggsBounds` and `FeynHiggs`; `make predef=``HS` the link to `HiggsBounds`, `HiggsSignals` and `FeynHiggs`; `make predef=``2HDMC` includes the link to `2HDMC`; `make clean` deletes all object files, libraries, and the executable `sushi`.

After compilation, one may perform a test run of `SusHi` by copying one of the input files from the `example-` to the `bin-`folder, change to the `bin-`folder, and run

```
./sushi sushi.in sushi.out
```

Note that apart from the input filename, the user also has to provide a name for the output file. For parameter scans, we recommend the auxiliary routines `SLHAroutines`, which can be downloaded from Ref. [117]. In the following we will discuss the input and output files in more detail.

#### 6.4. Input and output files

`SusHi` allows for calculations in the SM as well as in the MSSM. Although the former is in many respects a limiting case of the latter, `SusHi` distinguishes both cases, and we will discuss them separately in what follows.

##### 6.4.1. Standard Model

A typical input file for a SM calculation is shown in the following. It divides into blocks, each of which contains a number of entries, specified by one or more leading blanks, an integer “entry number”, a value, and a comment initiated by the hash symbol `#`.

```
Block SUSHI
 1 0 # model: 0 = SM, 1 = MSSM, 2 = 2HDM
 2 0 # 0 = scalar Higgs (h), 1 = pseudoscalar Higgs (A)
 3 0 # collider: 0 = p-p, 1 = p-pbar
 4 8000.d0 # center-of-mass energy in GeV
 5 2 # order ggh: -1 = off, 0 = LO, 1 = NLO, 2 = NNLO
 6 2 # order bbh: -1 = off, 0 = LO, 1 = NLO, 2 = NNLO
 7 2 # electroweak cont. for ggh:
    # 0 = no, 1 = light quarks at NLO, 2 = SM EW factor
19 1 # 0 = silent mode of SusHi, 1 = normal output
20 0 # ggh@nnlo subprocesses: 0=all, 10=ind. contributions
Block SMINPUTS # Standard Model inputs
 1 1.27934000e+02 # alpha_em^(-1)(MZ) SM MSbar
 2 1.16637000e-05 # G_Fermi in 1/GeV^2
 3 1.17200000e-01 # alpha_s(MZ) SM MSbar
 4 9.11876000e+01 # m_Z(pole)
 5 4.20000000e+00 # m_b(m_b)
 6 1.73300000e+02 # m_t(pole)
 8 1.27500000e+00 # m_c(m_c)
Block MASS
 1 125.000000 d0 # Higgs mass
Block DISTRIB
 1 0 # distribution : 0 = sigma_total, 1 = dsigma/dpt,
    # 2 = dsigma/dy, 3 = d^2sigma/dy/dpt
```

## Manual SusHi 1.4.1

```

# (values for pt and y: 22 and 32)
2 0 # pt-cut: 0 = no, 1 = pt > ptmin, 2 = pt < ptmax,
# 3 = ptmin < pt < ptmax
21 30.d0 # minimal pt-value ptmin in GeV
22 100.d0 # maximal pt-value ptmax in GeV
3 0 # rapidity-cut: 0 = no, 1 = Abs[y] < ymax,
# 2 = Abs[y] > ymin, 3 = ymin < Abs[y] < ymax
31 0.5d0 # minimal rapidity ymin
32 1.5d0 # maximal rapidity ymax
4 0 # 0 = rapidity, 1 = pseudorapidity
Block SCALES
1 1.0 # renormalization scale muR/mh
2 1.0 # factorization scale muF/mh
11 1.0 # renormalization scale muR/mh for bbh
12 .25 # factorization scale muF/mh for bbh
3 0 # 1 = Use (muR,muF)/Sqrt(mh^2+pt^2) for dsigma/dpt and d^2sigma/dy/dpt
Block RENORMBOT # Renormalization of the bottom sector
1 0 # m_b used for bottom Yukawa: 0 = OS, 1 = MSbar(mb), 2 = MSbar(muR)
Block PDFSPEC
1 MSTW2008lo68cl.LHgrid # name of pdf (lo)
11 0 # set number LO
2 MSTW2008nlo68cl.LHgrid # name of pdf (nlo)
12 0 # set number NLO
3 MSTW2008nnlo_asmzrange.LHgrid # name of pdf (nnlo)
13 0 # set number NNLO
(4 0 # set number LO, NLO, NNLO)
Block VEGAS
# parameters for NLO SusHi
1 10000 # Number of points
2 5 # Number of iterations
3 10 # Output format of VEGAS integration
# parameters for ggh@nnlo:
4 2000 # Number of points
5 5 # Number of iterations
14 5000 # Number of points in second run
15 2 # Number of iterations in second run
6 0 # Output format of VEGAS integration
# parameters for bbh@nnlo:
7 2000 # Number of points
8 5 # Number of iterations
17 5000 # Number of points in second run
18 2 # Number of iterations in second run
9 0 # Output format of VEGAS integration
Block FACTORS
1 0.d0 # factor for yukawa-couplings: c
2 1.d0 # t
3 1.d0 # b

```

Block `SUSHI` specifies the crucial input for `SusHi`, namely the model, the kind of Higgs boson to be considered (scalar or pseudo-scalar<sup>5</sup>), the type of collider, the center-of-mass energy, the perturbative order for gluon fusion and bottom-quark annihilation, and to which extent electro-weak corrections to gluon fusion should be taken into account (see Section 3.4) (entries 1–7). In addition, one can reduce `SusHi` screen output by setting entry 19 to 0. Entry 20 allows for an individual output of the `ggh@nnlo` subprocesses.

Block `SMINPUTS` contains the relevant SM input. We use the electro-magnetic coupling  $\alpha_{\text{EM}}(M_Z)$ , Fermi’s constant  $G_F$ , and the  $Z$ -boson mass  $m_Z$  (entries 1,2,4) to calculate the

<sup>5</sup>Apart from the scalar Higgs boson of the actual SM, `SusHi` also provides results for a pseudo-scalar Higgs-like particle whose coupling to fermions is obtained from the corresponding MSSM couplings by setting  $\tan\beta = 1$ .

$W$  mass  $m_W$  and the weak mixing angle  $\sin\theta_W$ . The input value for  $\alpha_s(m_Z)$  given in entry 3 is used for renormalization-group (RG) running and RG transformations. We allow this value to be different from the one required by the PDFs which are specified further below. The latter is taken from LHAPDF and enters the calculation as the coupling parameter of the perturbative expansion of the cross section, for example Eq. (18) and Eqs. (20). The charm- and bottom-quark masses (entries 8,5) are to be given in the  $\overline{\text{MS}}$  scheme as  $m_c(m_c)$  and  $m_b(m_b)$ , while the top-quark mass (entry 6) is required in the on-shell scheme. In the SM, the Higgs mass is a free parameter and has to be provided in `Block MASS`, entry 1.

`Block DISTRIB` controls cuts or distributions with respect to the transverse momentum  $p_T$  and/or the (pseudo-)rapidity  $y$  ( $\eta$ ), if desired. Note that differential cross sections (entry  $1 \in \{1, 2, 3\}$ ) can only be obtained for gluon fusion, not for bottom-quark annihilation. Entries 22 and/or 32 then specify the value of  $p_T$  and/or  $y$  ( $\eta$ ) at which the cross section will be evaluated. Cuts are possible both for gluon fusion and bottom-quark annihilation; they are applied by setting entry 1 to 0 (“total cross section”), and specifying entries 2,21,22 and/or 3,31,32. Note that entry 4 changes between rapidity  $y$  and pseudo-rapidity  $\eta$ .

`Block SCALES` defines the renormalization and factorization scales relative to the Higgs mass for gluon fusion (entries 1 and 2) and bottom quark annihilation (entries 11 and 12; if omitted, they default to entries 1 and 2). In case of  $p_T$  distributions, the user can switch to a  $p_T$  dependent renormalization and factorization scale (entry 3; gluon fusion only).

`Block RENORMBOT` offers different options for the renormalization of the bottom Yukawa coupling, see Section 2.4; three options are currently implemented (entry 1):

$$m_b^Y \in \{m_b^{\text{OS}}, m_b^{\overline{\text{MS}}}(m_b), m_b^{\overline{\text{MS}}}(\mu_R)\}.$$

Entry 4 allows to fix the pole bottom mass  $m_b^{\text{OS}}$  by hand.

`Block PDFSPEC` contains the PDF sets in the notation of LHAPDF, consisting of the name of the PDF grid file (entries 1–3), and the set numbers (entries 11, 12 and 13). If entry 4 provides a common set number, entries 11, 12 and 13 are overridden with the specific value.

`Block VEGAS` specifies integration parameters; note that distributions or cuts require higher numerical precision than the total cross section in order to reach comparable accuracy in the final result. Entries 1 and 2 specify the number of points and iterations in the VEGAS integration of the NLO gluon fusion cross section. If entries 11 and 12 are given, VEGAS is called twice, where the first call is used to setup the integration grid. For silent runs, entry 3 should be set to 0. The VEGAS parameters for `ggh@nnlo` and `bbh@nnlo` can be defined separately (entries 4,5,6,14,15 and 7,8,9,17,18; if omitted, these entries default to the ones given in the example input file above).

`Block FACTORS` finally allows for additional factors in the Yukawa couplings of the fermions. We add that also charm-quark contributions can be taken into account by setting the corresponding factor to 1. Then the  $c$ -quark contributions at (N)LO are added using the on-shell value  $m_c^{\text{OS}}$  calculated from  $m_c(m_c)$  as done for the on-shell bottom-quark mass. In case of the MSSM, for which a detailed prescription follows, the charm-quark contributions can be added as well.

### 6.4.2. 2-Higgs-Doublet-Model

The input of the 2HDM closely resembles the SM input. The user has to specify in addition the Higgs under consideration using Entry 2 of Block SUSHI. Moreover the corresponding Higgs mass has to be given in Block MASS together with the Higgs mixing angle  $\alpha$  in Block ALPHA and the ratio of the vacuum expectation values  $\tan\beta$  in Block MINPAR. The different types of the 2HDM as explained in Section 2.2 can be distinguished in Block 2HDM:

```
Block SUSHI
 1  2          # model: 0 = SM, 1 = MSSM, 2 = 2HDM
 2  0          # 0 = light Higgs (h), 1 = pseudoscalar (A), 2 = heavy Higgs (H)
Block 2HDM # 2HDM version according to arxiv:1106.0034
 2          # (1=Type I,2=Type II,3=Flipped,4=Lepton Specific)
Block MINPAR
 3  5.d0      # tanb
Block ALPHA
-5.0e-01     # mixing in Higgs sector
Block MASS
 25 125.00000d0 # Higgs mass h
 35 150.00000d0 # Higgs mass H
 36 300.00000d0 # Pseudoscalar Higgs mass A
```

For different input basis we recommend the link to 2HDMC. The 2HDM parameters are provided in the  $\lambda$  basis, the physical basis or the H2 basis. For details we refer to the 2HDMC manual. Example input files are provided in the `example`-folder. In case of the  $\lambda$  basis the relevant block takes the form:

```
Block 2HDMC # 2HDMC arXiv:0902.0851
 1  1          # 2HDMC key, 1=lambda basis, 2=physical basis, 3=H2 basis
 2  2          # 2HDM version type
 3  10.        # tan(beta)
 4  100.d0     # m12
 11 0.1d0     # lambda1
 12 0.2d0     # lambda2
 13 0.3d0     # lambda3
 14 0.4d0     # lambda4
 15 0.5d0     # lambda5
 16 0.0d0     # lambda6
 17 0.0d0     # lambda7
```

### 6.4.3. Minimal Supersymmetric Standard Model

In case of the MSSM, the input file contains a number of additional Blocks. We show them here, together with the relevant modifications of the SM version:

```
Block SUSHI
 1  1          # model: 0 = SM, 1 = MSSM
 2  0          # 0 = light Higgs (h), 1 = pseudoscalar (A), 2 = heavy Higgs (H)
[.....]
 5  2          # order ggh: -1 = off, 0 = LO, 1 = NLO, 2 = NNLO, 3 = ~NNLO stop
Block MINPAR
 3  5.d0      # tanb
Block EXTPAR
 3  800.d0    # M_3
 11 2000.d0   # A_t
 12 2000.d0   # A_b
 23 200.d0    # mu in GeV
 26 130.d0    # M_A0
 43 1000.d0   # M_Q3
 46 1000.d0   # M_TR
```

## Manual SusHi 1.4.1

```

49 1000.d0 # M_BR
Block FEYNHIGGS # FeynHiggs specific input
 1 0.d0 # M_1
 2 200.d0 # M_2
 3 2000.d0 # A in GeV (except from A_t, A_b)
 4 1000.d0 # M_SUSY in GeV (except from M_Q3, M_TR, M_BR)
Block RENORMBOT # Renormalization of the bottom sector
 1 0 # m_b used for bottom Yukawa: 0 = OS, 1 = MSbar(m_b), 2 = MSbar(muR)
 2 1 # tan(beta)-res. of Y_b: 0 = no, 1 = naive, 2 = full (for OS only)
 3 1 # Delta_b: Take Delta_b from FeynHiggs: 0 = no, 1 = yes
Block RENORMSBOT # Renormalization of the sbottom sector
 1 2 # m_b: 0 = OS, 1 = DRbar, 2 = dep; recommended: 2
 2 0 # A_b: 0 = OS, 1 = DRbar, 2 = dep; recommended: 0
 3 0 # theta_b: 0 = OS, 1 = DRbar ; recommended: 0
Block FACTORS
 1 0.d0 # factor for yukawa-couplings: c
 2 1.d0 # t
 3 1.d0 # b
 4 1.d0 # st
 5 1.d0 # sb

```

Entry 2 of Block `SUSHI` now distinguishes between the three MSSM Higgs bosons. Entry 5 allows to add approximated NNLO stop contributions for all Higgs bosons. Block `MINPAR`, entry 3 defines the value of  $\tan\beta$ . Block `EXTPAR` fixes the parameters of the third family of quarks and squarks in the MSSM. If the Block `FEYNHIGGS` is present, `SusHi` has to be linked to `FeynHiggs` (see Section 6.3) which will then be used to calculate the Higgs masses from the parameters of that Block. Starting from version `SusHi 1.4.1` the Block `FEYNHIGGSFLAGS` can be added to change the default setting of the `FeynHiggs` flags to the values provided in entries 1 to 9. The latter name the flags `mssmpart`, `fieldren`, `tanbren`, `higgsmix`, `p2approx`, `looplevel`, `runningMT`, `botResum`, `tlCplxApprox` with the default call being 400242110. For large SUSY masses `looplevel` should be set to 3. In addition to the SM version, Block `RENORMBOT` provides various ways of resumming  $t_\beta$ -enhanced effects for the on-shell bottom Yukawa coupling, see Section 2.4. For a running coupling (entry  $1 \in \{1, 2\}$ ), resummation of those effects is always performed as shown in Eq. (15f). Block `RENORMSBOT` provides the choice between the various options of Tab. 3. The alternative to Block `FEYNHIGGS` is the specification of the Higgs masses and the Higgs mixing angle  $\alpha$  by hand; for example:

```

Block ALPHA
-2.58961078E-01 # mixing in Higgs sector
Block MASS
25 125.216431E+00 # Higgs mass h
26 303.288802E+00 # Higgs mass H
36 130.000000E+00 # Pseudoscalar Higgs mass A

```

In this case, it is the user's responsibility to assure consistency of the Higgs mass and the other parameters. However, this option allows one to use `H3m` [85], for example, in order to take into account three-loop effects to the SUSY Higgs mass [84–86].

Example input files can be found in the subfolder `example`, namely a SM, a 2HDM and several MSSM input files, the latter for the usage with and without `FeynHiggs`. In case different soft-breaking masses for the slepton and squark generations should be specified we also refer to those input files and the webpage [1]. The outputs of `HiggsBounds` and/or `HiggsSignals` are provided on screen and in the Block `HiggsBoundsResults` and/or

## Manual SusHi 1.4.1

`HiggsSignalsResults`, which follow the notation provided in the corresponding code manuals. We note that the results of `HiggsBounds` and `HiggsSignals` are based on the cross section calculations of `FeynHiggs` to avoid the calculation of the inclusive cross sections at fixed collider energies.

### 6.4.4. Output file

SusHi outputs the results of the calculation as well as some key parameters derived from the input in the same format as the input file. A typical example is shown here:

```
Block SUSHIggh # Bon appetit
  1 9.60254100E+00 # ggh XS in pb
Block SUSHIbbh # Bon appetit
  1 4.90606675E+00 # bbh XS in pb
Block XSGGH # ggh cross sec. in pb (w/o EW)
  2 7.16713162E+00 # NLO
[.....individual channels]
Block XSGGHEFF # ggh xsec
  1 7.99562808E+00 # ggh@NLO
  2 1.01134207E+01 # ggh@NNLO
  3 4.43157467E-02 # electroweak factor
Block XSB BH # bbh cross sec. in pb
  1 7.07152627E+00 # LO
  2 6.24423880E+00 # NLO
  3 4.90606675E+00 # NNLO
Block HGG SUSY # couplings of light Higgs h to 3. generation
[.....]
Block MASSOUT
  1 1.11485384E+02 # Mphi in GeV
  5 4.20000000E+00 # m_b(m_b), MSbar
 25 1.11485384E+02 # MSSM-Mh in GeV
[.....SM masses/sbottom/stop masses]
Block ALPHA # Effective Higgs mixing parameter
 -8.66408199E-01 # alpha
Block STOPMIX # stop mixing matrix
  1 1 7.07921546E-01 # V_11
  1 2 -7.06291077E-01 # V_12
  2 1 7.06291077E-01 # V_21
  2 2 7.07921546E-01 # V_22
[.....]
Block AD
  3 3 2.00000000E+03 # used Ab in GeV - def. accord. to scheme
Block AU
  3 3 2.00000000E+03 # used At in GeV
```

The main result for the gluon fusion cross section, containing all corrections specified by the user in the input file, is given as entry 1 in `Block SUSHIggh`, the one for bottom-quark annihilation in `Block SUSHIbbh`. Individual contributions to the cross sections are listed in `Block XSGGH` and `Block XSB BH`; their meaning should be obvious from the comment in the output file. Note that the results denoted “LO” etc. mean that the LO partonic cross section is convolved with the PDF set given in entry 1 of `Block PDFSPEC` in the input file.

For gluon fusion, the `Block XSGGHEFF` contains the NNLO top-(s)quark results as obtained by `ggh@nnlo`, and the electro-weak correction factor as determined in Section 3.4.

In addition, `Block HGG SUSY` lists the non-resummed MSSM couplings of the quarks (and squarks) to the Higgs boson under consideration. `Block MASSOUT` gives the relevant SM and SUSY masses as well as the Higgs mass. Not shown above is the `Block INTERNALMASSES`,



which provides the different bottom masses entering the calculation of gluon-fusion cross sections, and **ALPHASOUT** showing the used values of  $\alpha_s(\mu_R)$  taken from the PDF sets at (N)LO.

Since **SusHi** makes use of various results from different groups, the output file contains a run-specific list of references. We kindly ask the user to cite the mentioned references. Finally all output files have the reprocessed input file attached at the end. Output files can be used as input files as well.

## 7. Conclusion

In this article we described the **Fortran** code **SusHi** for the calculation of the cross section for Higgs production in gluon fusion and bottom-quark annihilation at hadron colliders. It works in the SM, the 2HDM and the MSSM, evaluates inclusive cross sections, distributions, and allows for kinematical cuts on the Higgs 4-momentum. It includes higher order QCD and electro-weak corrections and takes into account the effect from squarks and gluinos.

**SusHi** allows one to choose among various renormalization schemes for the sbottom sector and the bottom Yukawa coupling, and includes the resummation of  $\tan\beta$ -enhanced effects. For the calculation of the Higgs mass in the MSSM **SusHi** can be linked to **FeynHiggs**. **SusHi** can be downloaded from Ref. [1].

*Acknowledgments.* This work was supported by DFG, contract C0214101A and the Helmholtz Alliance ‘‘Physics at the Terascale’’.

We are grateful to the authors of Refs. [37, 42, 44, 45, 75], in particular Pietro Slavich and Emanuele Bagnaschi for many helpful comments on our program, this manual, for many cross checks, and for fruitful discussions. Regarding the interpretation of **FeynHiggs** internal and output variables our thanks go to Thomas Hahn, Sven Heinemeyer, Heidi Rzehak and Georg Weiglein. Concerning the electro-weak contributions of light quarks, we thank Alessandro Vicini and Giuseppe Degrossi for comparing numbers.

## Appendix A. Formulas: Higgs-squark couplings

In this section we present the couplings of the three neutral Higgs bosons  $\phi$  of the MSSM to the quarks and squarks being implemented in **SusHi**. The relevant Feynman rules can be written in the form

$$\begin{array}{c} \phi \text{ (dashed)} \end{array} \begin{array}{c} \nearrow \bar{q} \\ \searrow q \end{array} = i \frac{m_q}{v} g_q^\phi \quad \text{and} \quad \begin{array}{c} \phi \text{ (dashed)} \end{array} \begin{array}{c} \nearrow \tilde{q}_j \\ \searrow \tilde{q}_i \end{array} = i \frac{m_q^2}{v} g_{\tilde{q},ij}^\phi, \quad (\text{A.1})$$

where  $v = 2m_W/g = 1/\sqrt{\sqrt{2}G_F} = \sqrt{v_d^2 + v_u^2}$ . The couplings  $g_q^\phi$  of the Higgs boson  $\phi$  to the quarks  $q$  with respect to the SM Higgs boson coupling were already presented in Tab. 2.

Manual SusHi 1.4.1

The couplings  $g_{\tilde{q},ij}^\phi$  of the squarks to the light and heavy Higgs can be split in the form

$$g_{\tilde{q},ij}^\phi = g_{\tilde{q},ij}^{\phi,\text{EW}} + g_{\tilde{q},ij}^{\phi,\mu} + g_{\tilde{q},ij}^{\phi,\alpha} \quad . \quad (\text{A.2})$$

In case of the light Higgs  $h$  we obtain for the couplings:

$$g_{\tilde{t},11}^{h,\text{EW}} = c_{\tilde{t},1}^{\text{EW}} c_{\theta_{\tilde{t}}}^2 + c_{\tilde{t},2}^{\text{EW}} s_{\theta_{\tilde{t}}}^2 \quad g_{\tilde{b},11}^{h,\text{EW}} = c_{\tilde{b},1}^{\text{EW}} c_{\theta_{\tilde{b}}}^2 + c_{\tilde{b},2}^{\text{EW}} s_{\theta_{\tilde{b}}}^2 \quad (\text{A.3})$$

$$g_{\tilde{t},22}^{h,\text{EW}} = c_{\tilde{t},1}^{\text{EW}} s_{\theta_{\tilde{t}}}^2 + c_{\tilde{t},2}^{\text{EW}} c_{\theta_{\tilde{t}}}^2 \quad g_{\tilde{b},22}^{h,\text{EW}} = c_{\tilde{b},1}^{\text{EW}} s_{\theta_{\tilde{b}}}^2 + c_{\tilde{b},2}^{\text{EW}} c_{\theta_{\tilde{b}}}^2 \quad (\text{A.4})$$

$$g_{\tilde{t},12}^{h,\text{EW}} = g_{\tilde{t},21}^{h,\text{EW}} = \frac{1}{2} (c_2^{\text{EW}} - c_1^{\text{EW}}) s_{2\theta_{\tilde{t}}} \quad g_{\tilde{b},12}^{h,\text{EW}} = g_{\tilde{b},21}^{h,\text{EW}} = \frac{1}{2} (c_2^{\text{EW}} - c_1^{\text{EW}}) s_{2\theta_{\tilde{b}}} \quad (\text{A.5})$$

$$g_{\tilde{t},11}^{h,\mu} = -g_{\tilde{t},22}^{h,\mu} = \frac{\mu \cos(\alpha - \beta)}{m_t s_\beta^2} s_{2\theta_{\tilde{t}}} \quad g_{\tilde{b},11}^{h,\mu} = -g_{\tilde{b},22}^{h,\mu} = -\frac{\mu \cos(\alpha - \beta)}{m_b c_\beta^2} s_{2\theta_{\tilde{b}}} \quad (\text{A.6})$$

$$g_{\tilde{t},12}^{h,\mu} = g_{\tilde{t},21}^{h,\mu} = \frac{\mu \cos(\alpha - \beta)}{m_t s_\beta^2} c_{2\theta_{\tilde{t}}} \quad g_{\tilde{b},12}^{h,\mu} = g_{\tilde{b},21}^{h,\mu} = -\frac{\mu \cos(\alpha - \beta)}{m_b c_\beta^2} c_{2\theta_{\tilde{b}}} \quad (\text{A.7})$$

$$g_{\tilde{t},11}^{h,\alpha} = \frac{c_\alpha}{s_\beta} \left( 2 + \frac{m_{\tilde{t}1}^2 - m_{\tilde{t}2}^2}{2m_t^2} s_{2\theta_{\tilde{t}}}^2 \right) \quad g_{\tilde{b},11}^{h,\alpha} = -\frac{s_\alpha}{c_\beta} \left( 2 + \frac{m_{\tilde{b}1}^2 - m_{\tilde{b}2}^2}{2m_b^2} s_{2\theta_{\tilde{b}}}^2 \right) \quad (\text{A.8})$$

$$g_{\tilde{t},22}^{h,\alpha} = \frac{c_\alpha}{s_\beta} \left( 2 - \frac{m_{\tilde{t}1}^2 - m_{\tilde{t}2}^2}{2m_t^2} s_{2\theta_{\tilde{t}}}^2 \right) \quad g_{\tilde{b},22}^{h,\alpha} = -\frac{s_\alpha}{c_\beta} \left( 2 - \frac{m_{\tilde{b}1}^2 - m_{\tilde{b}2}^2}{2m_b^2} s_{2\theta_{\tilde{b}}}^2 \right) \quad (\text{A.9})$$

$$g_{\tilde{t},12}^{h,\alpha} = g_{\tilde{t},21}^{h,\alpha} = \frac{c_\alpha}{s_\beta} \frac{m_{\tilde{t}1}^2 - m_{\tilde{t}2}^2}{2m_t^2} s_{2\theta_{\tilde{t}}} c_{2\theta_{\tilde{t}}} \quad g_{\tilde{b},12}^{h,\alpha} = g_{\tilde{b},21}^{h,\alpha} = -\frac{s_\alpha}{c_\beta} \frac{m_{\tilde{b}1}^2 - m_{\tilde{b}2}^2}{2m_b^2} s_{2\theta_{\tilde{b}}} c_{2\theta_{\tilde{b}}} \quad (\text{A.10})$$

Therein we made use of the abbreviations  $s_x = \sin x$  and  $c_x = \cos x$  and defined:

$$c_{\tilde{t},1}^{\text{EW}} = -\frac{m_Z^2}{m_t^2} \left( 1 - \frac{4}{3} s_{\theta_w}^2 \right) \sin(\alpha + \beta) \quad c_{\tilde{b},1}^{\text{EW}} = \frac{m_Z^2}{m_b^2} \left( 1 - \frac{2}{3} s_{\theta_w}^2 \right) \sin(\alpha + \beta) \quad (\text{A.11})$$

$$c_{\tilde{t},2}^{\text{EW}} = -\frac{m_Z^2}{m_t^2} \frac{4}{3} s_{\theta_w}^2 \sin(\alpha + \beta) \quad c_{\tilde{b},2}^{\text{EW}} = \frac{m_Z^2}{m_b^2} \frac{2}{3} s_{\theta_w}^2 \sin(\alpha + \beta) \quad (\text{A.12})$$

The couplings to the heavy Higgs  $H$  are easy to obtain by the replacement  $\alpha \rightarrow \alpha - \frac{\pi}{2}$  in the previous formulas. In case of the CP-odd Higgs  $A$  the couplings are given by:

$$g_{\tilde{t},11}^A = g_{\tilde{t},22}^A = g_{\tilde{b},11}^A = g_{\tilde{b},22}^A = 0 \quad (\text{A.13})$$

$$g_{\tilde{t},12}^A = -g_{\tilde{t},21}^A = \frac{1}{t_\beta} \frac{m_{\tilde{t}1}^2 - m_{\tilde{t}2}^2}{2m_t^2} s_{2\theta_{\tilde{t}}} + \frac{\mu}{m_t} \left( 1 + \frac{1}{t_\beta^2} \right) \quad (\text{A.14})$$

$$g_{\tilde{b},12}^A = -g_{\tilde{b},21}^A = t_\beta \frac{m_{\tilde{b}1}^2 - m_{\tilde{b}2}^2}{2m_b^2} s_{2\theta_{\tilde{b}}} + \frac{\mu}{m_b} (1 + t_\beta^2) \quad (\text{A.15})$$

We add that  $m_b$  is partially interpreted as the bottom mass in the sbottom sector, namely where it is meant to be part of the Higgs-sbottom coupling.

## References

- [1] SusHi can be downloaded from:  
<http://sushi.hepforge.org/>
- [2] G. Aad *et al.* [ATLAS Collaboration], “Observation of a new particle in the search for the Standard Model Higgs boson with the ATLAS detector at the LHC,” *Phys. Lett. B* **716** (2012) 1 [arXiv:1207.7214 [hep-ex]].
- [3] S. Chatrchyan *et al.* [CMS Collaboration], “Observation of a new boson at a mass of 125 GeV with the CMS experiment at the LHC,” *Phys. Lett. B* **716** (2012) 30 [arXiv:1207.7235 [hep-ex]].
- [4] S. Dittmaier and M. Schumacher, “The Higgs Boson in the Standard Model - From LEP to LHC: Expectations, Searches, and Discovery of a Candidate,” arXiv:1211.4828 [hep-ph].
- [5] S. Dittmaier *et al.* [LHC Higgs Cross Section Working Group Collaboration], “Handbook of LHC Higgs Cross Sections: 1. Inclusive Observables,” arXiv:1101.0593 [hep-ph].
- [6] S. Dittmaier *et al.* [LHC Higgs Cross Section Working Group Collaboration], “Handbook of LHC Higgs Cross Sections: 2. Differential Distributions,” arXiv:1201.3084 [hep-ph].
- [7] H. M. Georgi, S. L. Glashow, M. E. Machacek and D. V. Nanopoulos, “Higgs Bosons from Two Gluon Annihilation in Proton Proton Collisions,” *Phys. Rev. Lett.* **40** (1978) 692.
- [8] A. Djouadi, M. Spira and P. M. Zerwas, “Production of Higgs bosons in proton colliders: QCD corrections,” *Phys. Lett. B* **264** (1991) 440.
- [9] S. Dawson, “Radiative corrections to Higgs boson production,” *Nucl. Phys. B* **359** (1991) 283.
- [10] M. Spira, A. Djouadi, D. Graudenz and P. M. Zerwas, “Higgs boson production at the LHC,” *Nucl. Phys. B* **453** (1995) 17 [hep-ph/9504378].
- [11] R. V. Harlander and W. B. Kilgore, “Next-to-next-to-leading order Higgs production at hadron colliders,” *Phys. Rev. Lett.* **88** (2002) 201801 [hep-ph/0201206].
- [12] C. Anastasiou and K. Melnikov, “Higgs boson production at hadron colliders in NNLO QCD,” *Nucl. Phys. B* **646** (2002) 220 [hep-ph/0207004].
- [13] V. Ravindran, J. Smith and W. L. van Neerven, “NNLO corrections to the total cross-section for Higgs boson production in hadron hadron collisions,” *Nucl. Phys. B* **665** (2003) 325 [hep-ph/0302135].
- [14] S. Marzani, R. D. Ball, V. Del Duca, S. Forte and A. Vicini, “Higgs production via gluon-gluon fusion with finite top mass beyond next-to-leading order,” *Nucl. Phys. B* **800** (2008) 127 [arXiv:0801.2544 [hep-ph]].
- [15] R. V. Harlander and K. J. Ozeren, “Finite top mass effects for hadronic Higgs production at next-to-next-to-leading order,” *JHEP* **0911** (2009) 088 [arXiv:0909.3420 [hep-ph]].
- [16] A. Pak, M. Rogal and M. Steinhauser, “Finite top quark mass effects in NNLO Higgs boson production at LHC,” *JHEP* **1002** (2010) 025 [arXiv:0911.4662 [hep-ph]].
- [17] R. V. Harlander, H. Mantler, S. Marzani and K. J. Ozeren, “Higgs production in gluon fusion at next-to-next-to-leading order QCD for finite top mass,” *Eur. Phys. J. C* **66** (2010) 359 [arXiv:0912.2104 [hep-ph]].
- [18] A. Pak, M. Rogal, M. Steinhauser, “Production of scalar and pseudo-scalar Higgs bosons to next-to-next-to-leading order at hadron colliders”, *JHEP* **1109**, 088 (2011) [arXiv:1107.3391].
- [19] S. Catani, D. de Florian, M. Grazzini and P. Nason, “Soft gluon resummation for Higgs boson production at hadron colliders,” *JHEP* **0307** (2003) 028 [hep-ph/0306211].
- [20] S. Moch and A. Vogt, “Higher-order soft corrections to lepton pair and Higgs boson production,” *Phys. Lett. B* **631** (2005) 48 [hep-ph/0508265].
- [21] A. Idilbi, X. -d. Ji, J. -P. Ma and F. Yuan, “Threshold resummation for Higgs production in effective field theory,” *Phys. Rev. D* **73** (2006) 077501 [hep-ph/0509294].
- [22] A. Idilbi, X. -d. Ji and F. Yuan, “Resummation of threshold logarithms in effective field theory for DIS, Drell-Yan and Higgs production,” *Nucl. Phys. B* **753** (2006) 42 [hep-ph/0605068].
- [23] V. Ravindran, “Higher-order threshold effects to inclusive processes in QCD,” *Nucl. Phys. B* **752** (2006) 173 [hep-ph/0603041].
- [24] V. Ahrens, T. Becher, M. Neubert and L. L. Yang, “Renormalization-Group Improved Prediction for Higgs Production at Hadron Colliders,” *Eur. Phys. J. C* **62** (2009) 333 [arXiv:0809.4283 [hep-ph]].

- [25] S. Actis, G. Passarino, C. Sturm and S. Uccirati, “NLO Electroweak Corrections to Higgs Boson Production at Hadron Colliders,” *Phys. Lett. B* **670** (2008) 12 [arXiv:0809.1301 [hep-ph]].
- [26] U. Aglietti, R. Bonciani, G. Degrassi and A. Vicini, “Two loop light fermion contribution to Higgs production and decays,” *Phys. Lett. B* **595** (2004) 432 [hep-ph/0404071].
- [27] R. Bonciani, G. Degrassi and A. Vicini, “On the Generalized Harmonic Polylogarithms of One Complex Variable,” *Comput. Phys. Commun.* **182** (2011) 1253 [arXiv:1007.1891 [hep-ph]].
- [28] R.V. Harlander and W.B. Kilgore, “Production of a pseudo-scalar Higgs boson at hadron colliders at next-to-next-to leading order”, *JHEP* **0210**, 017 (2002) [hep-ph/0208096].
- [29] C. Anastasiou and K. Melnikov, “Pseudoscalar Higgs boson production at hadron colliders in NNLO QCD”, *Phys. Rev. D* **67**, 037501 (2003) [hep-ph/0208115].
- [30] T. D. Lee, *Phys. Rev. D* **8** (1973) 1226.
- [31] G. C. Branco, P. M. Ferreira, L. Lavoura, M. N. Rebelo, M. Sher and J. P. Silva, *Phys. Rept.* **516** (2012) 1 [arXiv:1106.0034].
- [32] N. Craig and S. Thomas, *JHEP* **1211** (2012) 083 [arXiv:1207.4835].
- [33] A. Djouadi, “The Anatomy of electro-weak symmetry breaking. I: The Higgs boson in the standard model,” *Phys. Rept.* **457** (2008) 1 [hep-ph/0503172].
- [34] A. Djouadi, “The Anatomy of electro-weak symmetry breaking. II. The Higgs bosons in the minimal supersymmetric model,” *Phys. Rept.* **459** (2008) 1 [hep-ph/0503173].
- [35] R. V. Harlander and M. Steinhauser, “Hadronic Higgs production and decay in supersymmetry at next-to-leading order,” *Phys. Lett. B* **574** (2003) 258 [hep-ph/0307346].
- [36] R. V. Harlander and M. Steinhauser, “Supersymmetric Higgs production in gluon fusion at next-to-leading order,” *JHEP* **0409** (2004) 066 [hep-ph/0409010].
- [37] G. Degrassi and P. Slavich, “On the NLO QCD corrections to Higgs production and decay in the MSSM,” *Nucl. Phys. B* **805** (2008) 267 [arXiv:0806.1495 [hep-ph]].
- [38] R.V. Harlander and M. Steinhauser, “Effects of SUSY-QCD in hadronic Higgs production at next-to-next-to-leading order”, *Phys. Rev. D* **68**, 111701 (2003) [hep-ph/0308210].
- [39] A. Pak, M. Steinhauser and N. Zerf, “Towards Higgs boson production in gluon fusion to NNLO in the MSSM,” *Eur. Phys. J. C* **71** (2011) 1602 [arXiv:1012.0639 [hep-ph]].
- [40] A. Pak, M. Steinhauser and N. Zerf, “Supersymmetric next-to-next-to-leading order corrections to Higgs boson production in gluon fusion,” *JHEP* **1209** (2012) 118 [arXiv:1208.1588 [hep-ph]].
- [41] R. V. Harlander and F. Hofmann, *JHEP* **0603** (2006) 050 [hep-ph/0507041].
- [42] G. Degrassi and P. Slavich, “NLO QCD bottom corrections to Higgs boson production in the MSSM,” *JHEP* **1011** (2010) 044 [arXiv:1007.3465 [hep-ph]].
- [43] R. V. Harlander, F. Hofmann and H. Mantler, “Supersymmetric Higgs production in gluon fusion,” *JHEP* **1102** (2011) 055 [arXiv:1012.3361 [hep-ph]].
- [44] G. Degrassi, S. Di Vita and P. Slavich, “NLO QCD corrections to pseudoscalar Higgs production in the MSSM,” *JHEP* **1108** (2011) 128 [arXiv:1107.0914 [hep-ph]].
- [45] G. Degrassi, S. Di Vita and P. Slavich, “On the NLO QCD corrections to the production of the heaviest neutral Higgs scalar in the MSSM,” arXiv:1204.1016 [hep-ph].
- [46] C. Anastasiou, S. Beerli and A. Daleo, “The Two-loop QCD amplitude  $gg \rightarrow h, H$  in the Minimal Supersymmetric Standard Model,” *Phys. Rev. Lett.* **100** (2008) 241806 [arXiv:0803.3065 [hep-ph]].
- [47] C. Anastasiou, S. Beerli, S. Bucherer, A. Daleo and Z. Kunszt, “Two-loop amplitudes and master integrals for the production of a Higgs boson via a massive quark and a scalar-quark loop,” *JHEP* **0701** (2007) 082 [hep-ph/0611236].
- [48] U. Aglietti, R. Bonciani, G. Degrassi and A. Vicini, “Analytic Results for Virtual QCD Corrections to Higgs Production and Decay,” *JHEP* **0701** (2007) 021 [hep-ph/0611266].
- [49] M. Muhlleitner and M. Spira, “Higgs Boson Production via Gluon Fusion: Squark Loops at NLO QCD,” *Nucl. Phys. B* **790** (2008) 1 [hep-ph/0612254].
- [50] R. Harlander, M. Krämer, M. Schumacher, “Bottom-quark associated Higgs-boson production: reconciling the four- and five-flavour scheme approach”, [arXiv:1112.3478] LHC Higgs Cross Section Working Group Wiki Page.

- [51] F. Maltoni, Z. Sullivan, S. Willenbrock, “Higgs-boson production via bottom-quark fusion”, *Phys. Rev. D* **67**, 093005 (2003) [hep-ph/0301033].
- [52] R. V. Harlander and W. B. Kilgore, “Higgs boson production in bottom quark fusion at next-to-next-to leading order,” *Phys. Rev. D* **68** (2003) 013001 [hep-ph/0304035].
- [53] S. Dittmaier, M. Kramer, A. Muck and T. Schluter, “MSSM Higgs-boson production in bottom-quark fusion: Electroweak radiative corrections,” *JHEP* **0703** (2007) 114 [hep-ph/0611353].
- [54] S. Dawson, C. B. Jackson and P. Jaiswal, “SUSY QCD Corrections to Higgs-b Production : Is the  $\Delta_b$  Approximation Accurate?,” *Phys. Rev. D* **83** (2011) 115007 [arXiv:1104.1631 [hep-ph]].
- [55] R. Harlander and P. Kant, “Higgs production and decay: Analytic results at next-to-leading order QCD,” *JHEP* **0512** (2005) 015 [hep-ph/0509189].
- [56] R. Harlander, <http://www.robert-harlander.de/software/ggh@nnlo>.
- [57] T. Banks, “Supersymmetry and the Quark Mass Matrix,” *Nucl. Phys. B* **303** (1988) 172.
- [58] L. J. Hall, R. Rattazzi and U. Sarid, “The Top quark mass in supersymmetric SO(10) unification,” *Phys. Rev. D* **50** (1994) 7048 [hep-ph/9306309].
- [59] R. Hempfling, “Yukawa coupling unification with supersymmetric threshold corrections,” *Phys. Rev. D* **49** (1994) 6168.
- [60] M. S. Carena, M. Olechowski, S. Pokorski and C. E. M. Wagner, “Electroweak symmetry breaking and bottom - top Yukawa unification,” *Nucl. Phys. B* **426** (1994) 269 [hep-ph/9402253].
- [61] M. S. Carena, D. Garcia, U. Nierste and C. E. M. Wagner, “Effective Lagrangian for the  $\bar{t}bH^+$  interaction in the MSSM and charged Higgs phenomenology,” *Nucl. Phys. B* **577** (2000) 88 [hep-ph/9912516].
- [62] M. Carena, D. Garcia, U. Nierste and C.E.M. Wagner, “ $b \rightarrow s\gamma$  and supersymmetry with large  $\tan\beta$ ”, *Phys. Lett. B* **499**, 141 (2001) [hep-ph/0010003].
- [63] R. Harlander, <http://www.robert-harlander.de/software/bbh@nnlo>.
- [64] M. R. Whalley, D. Bourilkov and R. C. Group, “The Les Houches accord PDFs (LHAPDF) and LHAGLUE,” hep-ph/0508110.
- [65] S. Heinemeyer, W. Hollik and G. Weiglein, “The Masses of the neutral CP - even Higgs bosons in the MSSM: Accurate analysis at the two loop level,” *Eur. Phys. J. C* **9** (1999) 343 [hep-ph/9812472].
- [66] S. Heinemeyer, W. Hollik and G. Weiglein, “FeynHiggs: A Program for the calculation of the masses of the neutral CP even Higgs bosons in the MSSM,” *Comput. Phys. Commun.* **124** (2000) 76 [hep-ph/9812320].
- [67] G. Degrandi, S. Heinemeyer, W. Hollik, P. Slavich and G. Weiglein, “Towards high precision predictions for the MSSM Higgs sector,” *Eur. Phys. J. C* **28** (2003) 133 [hep-ph/0212020].
- [68] M. Frank, T. Hahn, S. Heinemeyer, W. Hollik, H. Rzehak and G. Weiglein, “The Higgs Boson Masses and Mixings of the Complex MSSM in the Feynman-Diagrammatic Approach,” *JHEP* **0702** (2007) 047 [hep-ph/0611326].
- [69] P. Bechtle, O. Brein, S. Heinemeyer, G. Weiglein and K. E. Williams, *Comput. Phys. Commun.* **181** (2010) 138 [arXiv:0811.4169].
- [70] P. Bechtle, O. Brein, S. Heinemeyer, G. Weiglein and K. E. Williams, *Comput. Phys. Commun.* **182** (2011) 2605 [arXiv:1102.1898].
- [71] P. Bechtle, O. Brein, S. Heinemeyer, O. Stl, T. Stefaniak, G. Weiglein and K. E. Williams, *Eur. Phys. J. C* **74** (2014) 2693 [arXiv:1311.0055].
- [72] P. Bechtle, S. Heinemeyer, O. Stl, T. Stefaniak and G. Weiglein, *Eur. Phys. J. C* **74** (2014) 2711 [arXiv:1305.1933].
- [73] D. Eriksson, J. Rathsman and O. Stal, *Comput. Phys. Commun.* **181** (2010) 189 [arXiv:0902.0851].
- [74] M. Spira, “HIGLU: A program for the calculation of the total Higgs production cross-section at hadron colliders via gluon fusion including QCD corrections,” hep-ph/9510347.
- [75] E. Bagnaschi, G. Degrandi, P. Slavich and A. Vicini, “Higgs production via gluon fusion in the POWHEG approach in the SM and in the MSSM,” *JHEP* **1202** (2012) 088 [arXiv:1111.2854 [hep-ph]].
- [76] C. Anastasiou, S. Buehler, F. Herzog and A. Lazopoulos, “Total cross-section for Higgs boson hadroproduction with anomalous Standard Model interactions,” *JHEP* **1112** (2011) 058 [arXiv:1107.0683 [hep-ph]].

- [77] C. Anastasiou, S. Bucherer, Z. Kunszt, “HPro: A NLO Monte-Carlo for Higgs production via gluon fusion with finite heavy quark masses”, [arXiv:0907.2362].
- [78] S. Catani and M. Grazzini, “An NNLO subtraction formalism in hadron collisions and its application to Higgs boson production at the LHC,” *Phys. Rev. Lett.* **98** (2007) 222002 [hep-ph/0703012].
- [79] S. Catani and M. Grazzini, “HNNLO: a Monte Carlo program to compute Higgs boson production at hadron colliders”, PoS RADCOR2007, 046 (2007) [arXiv:0802.1410].
- [80] C. Anastasiou, K. Melnikov, F. Petriello, “Higgs boson production at hadron colliders: Differential cross sections through next-to-next-to-leading order”, *Phys. Rev. Lett.* **93**, 262002 (2004) [hep-ph/0409088].
- [81] J.R. Ellis, G. Ridolfi, F. Zwirner, “Radiative corrections to the masses of supersymmetric Higgs bosons”, *Phys. Lett. B* **257**, 83 (1991).
- [82] Y. Okada, M. Yamaguchi, T. Yanagida, “Upper bound of the lightest Higgs boson mass in the minimal supersymmetric standard model”, *Prog. Theor. Phys.* **85**, 1 (1991).
- [83] H.E. Haber and R. Hempfling, “Can the mass of the lightest Higgs boson of the Minimal Supersymmetric Model be larger than  $M_Z$ ?”, *Phys. Rev. Lett.* **66**, 1815 (1991).
- [84] R.V. Harlander, P. Kant, L. Mihaila, M. Steinhauser, “Higgs boson mass in supersymmetry to three loops”, *Phys. Rev. Lett.* **100**, 191602 (2008); (E) *ibid.* **101**, 039901 (2008) [arXiv:0803.0672].
- [85] P. Kant, R.V. Harlander, L. Mihaila, M. Steinhauser, “Light MSSM Higgs boson mass to three-loop accuracy”, *JHEP* **1008**, 104 (2010) [arXiv:1005.5709].
- [86] S. P. Martin, “Three-loop corrections to the lightest Higgs scalar boson mass in supersymmetry”, *Phys. Lett. B* **75**, 055005 (2007) [hep-ph/0701051].
- [87] S. Heinemeyer, W. Hollik, H. Rzehak and G. Weiglein, “High-precision predictions for the MSSM Higgs sector at  $\mathcal{O}(\alpha(b) \alpha(s))$ ,” *Eur. Phys. J. C* **39** (2005) 465 [hep-ph/0411114].
- [88] Y. Yamada, “Radiative corrections to sfermion mass splittings,” *Phys. Rev. D* **54** (1996) 1150 [hep-ph/9602279].
- [89] A. Bartl, H. Eberl, K. Hidaka, T. Kon, W. Majerotto and Y. Yamada, “QCD corrections to Higgs boson decays into squarks in the minimal supersymmetric standard model,” *Phys. Lett. B* **402** (1997) 303 [hep-ph/9701398].
- [90] A. Bartl, H. Eberl, K. Hidaka, S. Kraml, W. Majerotto, W. Porod and Y. Yamada, “SUSY - QCD corrections to top and bottom squark decays into Higgs bosons,” *Phys. Rev. D* **59** (1999) 115007 [hep-ph/9806299].
- [91] H. Eberl, K. Hidaka, S. Kraml, W. Majerotto and Y. Yamada, “Improved SUSY QCD corrections to Higgs boson decays into quarks and squarks,” *Phys. Rev. D* **62** (2000) 055006 [hep-ph/9912463].
- [92] A. Brignole, G. Degrassi, P. Slavich and F. Zwirner, “On the two loop sbottom corrections to the neutral Higgs boson masses in the MSSM,” *Nucl. Phys. B* **643** (2002) 79 [hep-ph/0206101].
- [93] S. Heinemeyer, H. Rzehak and C. Schappacher, “Proposals for Bottom Quark/Squark Renormalization in the Complex MSSM,” *Phys. Rev. D* **82** (2010) 075010 [arXiv:1007.0689 [hep-ph]].
- [94] K. Melnikov and T. v. Ritbergen, “The Three loop relation between the  $\overline{\text{MS}}$ -bar and the pole quark masses,” *Phys. Lett. B* **482** (2000) 99 [hep-ph/9912391].
- [95] K. G. Chetyrkin and M. Steinhauser, “The Relation between the  $\overline{\text{MS}}$ -bar and the on-shell quark mass at order  $\alpha(s)^3$ ,” *Nucl. Phys. B* **573** (2000) 617 [hep-ph/9911434].
- [96] L. Hofer, U. Nierste and D. Scherer, “Resummation of tan-beta-enhanced supersymmetric loop corrections beyond the decoupling limit,” *JHEP* **0910** (2009) 081 [arXiv:0907.5408 [hep-ph]].
- [97] D. Noth and M. Spira, “Supersymmetric Higgs Yukawa Couplings to Bottom Quarks at next-to-next-to-leading Order”, *JHEP* **1106**, 084 (2011) [arXiv:1001.1935].
- [98] D. Noth and M. Spira, “Higgs Boson Couplings to Bottom Quarks: Two-Loop Supersymmetry-QCD Corrections”, *Phys. Rev. Lett.* **101**, 181801 (2008) [arXiv:0808.0087].
- [99] A. Bauer, L. Mihaila, J. Salomon, “Matching coefficients for  $\alpha_s$  and  $m_b$  to  $\mathcal{O}(\alpha_s^2)$  in the MSSM”, *JHEP* **0902**, 037 (2009) [arXiv:0810.5101].
- [100] G. Passarino and M. J. G. Veltman, “One Loop Corrections for  $e^+ e^-$  Annihilation Into  $\mu^+ \mu^-$  in the Weinberg Model,” *Nucl. Phys. B* **160** (1979) 151.
- [101] R. Harlander, <http://www.robert-harlander.de/software>.

- [102] E. Bagnaschi, R. V. Harlander, S. Liebler, H. Mantler, P. Slavich and A. Vicini, *JHEP* **1406** (2014) 167 [arXiv:1404.0327].
- [103] C. Anastasiou, R. Boughezal and F. Petriello, “Mixed QCD-electroweak corrections to Higgs boson production in gluon fusion,” *JHEP* **0904** (2009) 003 [arXiv:0811.3458 [hep-ph]].
- [104] J. Beringer *et al.* [Particle Data Group Collaboration], “Review of Particle Physics (RPP),” *Phys. Rev. D* **86** (2012) 010001.
- [105] R. Raitio and W. W. Wada, “Higgs Boson Production At Large Transverse Momentum In Qcd,” *Phys. Rev. D* **19** (1979) 941.
- [106] J. N. Ng and P. Zakarauskas, “A QCD parton calculation of conjoined production of Higgs bosons and heavy flavors in p anti-p collision,” *Phys. Rev. D* **29** (1984) 876.
- [107] Z. Kunszt, “Associated Production of Heavy Higgs Boson with Top Quarks,” *Nucl. Phys. B* **247** (1984) 339.
- [108] R. M. Barnett, H. E. Haber and D. E. Soper, “Ultraheavy Particle Production from Heavy Partons at Hadron Colliders,” *Nucl. Phys. B* **306** (1988) 697.
- [109] D. A. Dicus and S. Willenbrock, “Higgs Boson Production from Heavy Quark Fusion,” *Phys. Rev. D* **39** (1989) 751.
- [110] J. Guasch, P. Hafliger and M. Spira, “MSSM Higgs decays to bottom quark pairs revisited,” *Phys. Rev. D* **68** (2003) 115001 [hep-ph/0305101].
- [111] R. Harlander and M. Wiesemann, “Jet-veto in bottom-quark induced Higgs production at next-to-next-to-leading order”, *JHEP* **1204**, 066 (2012) [arXiv:1111.2182].
- [112] R. V. Harlander, K. J. Ozeren and M. Wiesemann, “Higgs plus jet production in bottom quark annihilation at next-to-leading order,” *Phys. Lett. B* **693** (2010) 269 [arXiv:1007.5411 [hep-ph]].
- [113] G. Bozzi, S. Catani, D. de Florian, M. Grazzini, “Transverse-momentum resummation and the spectrum of the Higgs boson at the LHC”, *Nucl. Phys. B* **737**, 73 (2006) [hep-ph/0508068].
- [114] H. Mantler and M. Wiesemann, “Top- and bottom-mass effects in hadronic Higgs production at small transverse momenta through LO+NLL”, [arXiv:1210.8263].
- [115] P. Z. Skands, B. C. Allanach, H. Baer, C. Balazs, G. Belanger, F. Boudjema, A. Djouadi and R. Godbole *et al.*, “SUSY Les Houches accord: Interfacing SUSY spectrum calculators, decay packages, and event generators,” *JHEP* **0407** (2004) 036 [hep-ph/0311123].
- [116] B. C. Allanach, C. Balazs, G. Belanger, M. Bernhardt, F. Boudjema, D. Choudhury, K. Desch and U. Ellwanger *et al.*, “SUSY Les Houches Accord 2,” *Comput. Phys. Commun.* **180** (2009) 8 [arXiv:0801.0045 [hep-ph]].
- [117] R. Harlander, <http://www.robert-harlander.de/software/slharoutines>.